



INVESTOR'S GUIDE

2015/2016 EDITION



invest *in*
REUNION





Reunion Island, your future !



Do you have a project ? Contact us...

investinreunion@nexa.re

www.investinreunion.re



Index

04-63

1 REUNION ISLAND, YOUR IDEAL BUSINESS DESTINATION

# Europe in the heart of the Indian Ocean	08
# World-class infrastructures	12
# Reunion Island, region of excellence in terms of training, research, development & innovation	30
# Extremely attractive investment conditions	48

2 REUNION ISLAND'S SECTORS OF EXCELLENCE

- # Presentation of sectors
- # Specific funding for each sector
- # Actors and partners



3 LIVING IN REUNION ISLAND 129

4 NEXA, SERVING TO ACCELERATE PROJECTS OF THE FUTURE 133



**REUNION ISLAND,
your ideal business
destination**

1



Surface area
2,512
km²

Population
845,000
inhabitants
(2014)

GDP per inhabitants
€20,250
(2014)

Nominal GDP
17,2
billion €
(2014)

44,265
companies
(2012)

GDP growth rate in current values
3.1%

China



Australia



LOCATION

Mascarene Archipelago, Indian Ocean
55°30' east longitude - 21°15' south latitude

GEOGRAPHY AND CLIMATE

Surface area: 2,512 km²
Climate: moderate tropical

IDENTITY

Official name: Reunion Island
Status: mono-departmental region of the French Republic, Outermost region of the European Union (OMR)
Administrative break-down: 1 region, 1 department, 24 municipalities, 5 Public Establishments for Inter-municipal Cooperation
Main City: city of Saint Denis
Language: French

DEMOGRAPHY

Population: 845,000 inhabitants (2014)
Annual demographic growth: 1.0 % (2012)

ECONOMY

GDP Nominal: 17.2 BN € (2014)
GDP per inhabitant: €20,250 (2014)
GDP growth rate: 3.1 % (2014/2013), in current values
Priority sectors identified for economic development by the Regional Council:
Renewable Energy and the Environment, Tourism, Agri-food, Digital

5

good reasons to choose REUNION ISLAND

1

Europe in the heart of the Indian Ocean

A French and European Outermost Region (OMR) in the southern hemisphere, the wealthiest region in the Indian Ocean, an ideal vantage point for developing your business towards Asia, the Middle East, Africa and Europe.

2

Quality infrastructure and excellent connections

providing a permanent gateway to the rest of the world.

3

Extremely attractive investment conditions

Up to €3 million in investment grants!

4

A stable, secure and modern business environment

Application of French and European norms at every level, political and judicial stability, guaranty of monetary stability.

5

A region of excellence in terms of training and research

Training levels of European standard for all disciplines and levels of expertise, an exceptional capacity for research and innovation specific to a tropical island environment.

Setting up in Reunion also means you can enjoy an exceptional quality of life all year round, on a beautiful island which has UNESCO World Heritage status.

A pleasant tropical climate, one of the few active volcanoes in the world, unique protected landscapes in the heart of one of France's 11 national parks, and a warm and welcoming population whose ethnic diversity is also their strength.

EUROPE in the heart of the Indian Ocean



Reunion Island, a French European territory

As a French region in the Mascarene archipelago, Reunion is also a European region of the Indian Ocean. Near Africa, this Outermost Region of the European Union (OMR) is a secure and modern setting for the development of your projects.

Part of the Eurozone, and organized according to the French political and administrative model, Reunion Island provides a solid guarantee in terms of monetary, political and social stability. Applying the common law system and benefiting from specific measures or exceptions which take into account its specific geographical location, Reunion operates within a fully transparent legislative framework

Reunion's dual character as both a French and an outermost EU region enables access to various national and European support mechanisms for economic activity. Reunion Island's different infrastructures all meet European standards and the services associated with them boast a high level of quality.

A stable, secure and modern business environment

POLITICAL AND ADMINISTRATIVE ORGANIZATION

Reunion is a mono-departmental French region (DROM) which also holds the status of outermost region of the European Union (OMR). French laws and regulations as well as European Community law apply in their own right and may be subject to specific measures or derogations, given the specific characteristics and constraints of the territory.

Reunion Island is a French administrative region and department and, like other overseas regions, consists of a single department. The head offices of the Prefect, the Regional Council and the General Council are all located in the main town, which is Saint Denis.

A GUARANTEE OF FRENCH AND EUROPEAN NORMS

In terms of infrastructure for health, housing and services, Reunion is equipped with facilities which are similar to those of other French regions. Reunion also provides a safe and secure living environment. From a health perspective, French and European standards apply at all levels, in terms of health, food and housing. Cutting edge public healthcare equipment and specialists, such as the University Hospital of Reunion (CHU), enable comprehensive healthcare treatment on the island.

Its geographical location has also resulted in special measures taken for construction, public health and the protection of biodiversity, thus exceeding the standards of regions in continental Europe in an effort to provide solutions for Reunion's insular and tropical nature, qualifying the island as a veritable centre of excellence.

MONETARY ENVIRONMENT

Incorporated into the eurozone, Reunion is a stable area as far as macroeconomics is concerned, and also boasts a quality banking sector.

Reliable, modern and fully connected to major financial institutions, Reunion's banking environment provides the resources necessary for the development of economic activity and support for household spending.

(see page 56-57: «Financial actors in Reunion»)

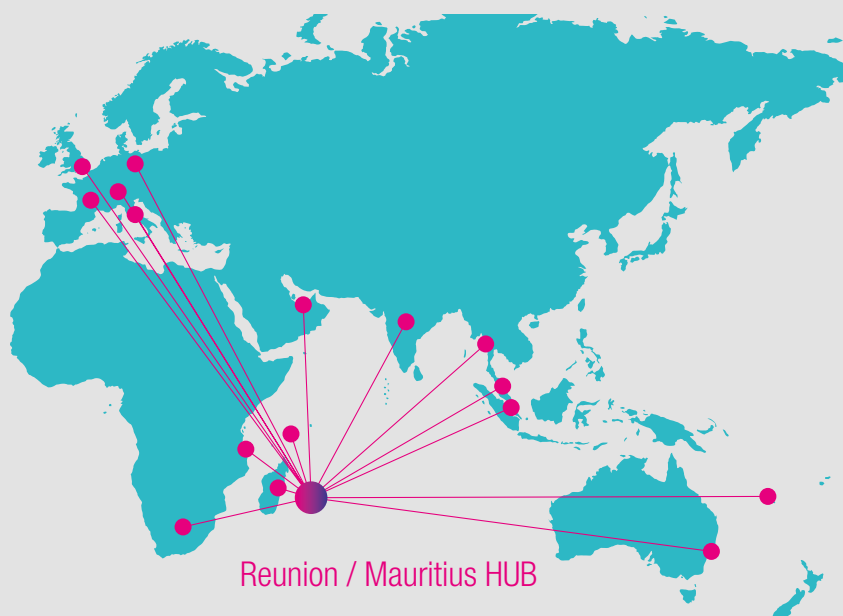
A geostrategic position in the heart of the Indian Ocean

Reunion is 200 km away from Mauritius Island, approximately 800 km from Madagascar, and 2,000 km from Africa: it is thus at the centre of the southwestern area of the Indian Ocean, an area which is both continental and insular.

For several years, Reunion has been developing strong relationships with several African countries (South Africa, Mozambique, Madagascar, Mauritius...) and regional integration and cooperation organizations such as the COMESA (Common Market for Eastern and Southern Africa) and the SADC (Southern African Development Community). Reunion is a member of the Indian Ocean Commission (IOC), which also includes the Seychelles, Mauritius Island, Madagascar and the Comoros.

As a European Region mainly surrounded by African territories, including many « Developing Countries » (LDCs), Reunion is primarily concerned with the implementation of the Economic Partnership Agreements (EPAs) between the European Union (EU) and countries of the ACP (Africa, Caribbean and the Pacific). Because they redefine the terms of trade exchanges at the borders of the EU and the ACP states, these agreements have a direct impact on the dynamics of economic integration in the Indian Ocean area, where Reunion Island is called upon to play a decisive role.

These links are strengthened through different frameworks: decentralized cooperation agreements signed between the Regional Council of Reunion and foreign regions, trade exchanges and partnerships between private economic entities, multilateral projects identified in response to issues which are common to countries in the area (climate risks, food safety, health, biodiversity conservation, maritime security, military cooperation ...).



An aerial photograph of a coastal road in Reunion Island. The road is a two-lane asphalt highway with a white dashed center line and a solid white edge line. It curves along the coastline, starting from a rocky shore with white waves in the foreground and extending towards a bay in the background. The landscape is lush green with some brown patches, possibly agricultural fields. In the distance, there are hills and a small town. The sky is blue with some white clouds. The left edge of the image has a white, perforated border.

Due to
its unique
geographical location,
its status
as an OMR and
its dynamic environment,
Reunion Island
has many
competitive advantages
enabling access to
economic markets across
the Indian Ocean area.

Here you will find
all the guarantees
and conditions
necessary to achieve
and succeed
in your investments.

World class INFRASTRUCTURES



Transport infrastructures

at the crossroads between Asia/America and Europe/Africa



Ports



MAIN SEA PORT OF REUNION ISLAND (GPMDLR)

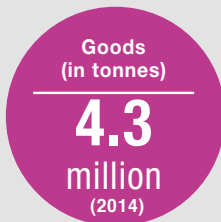
Located at the crossroads of major shipping routes, Reunion Island's port is a vantage point for the distribution of goods across the entire Indian Ocean.

Located in the northwest of the island in the town of Le Port, it consists of two sites 3 km apart, Port Ouest and Port Est. Uses here are multiple (trade, fishing, ship repairs, yachting, cruises or even military activity), and the port has continued to see its traffic grow thanks to the impetus of its commercial momentum and the island's economic development.

Management of this port of national interest was granted to the Chamber of Commerce and Industry of Reunion (CCIR), and it has the infrastructure, equipment and tools to match European standards, making it a modern and efficient port in the heart of the Indian Ocean.

Reunion's main sea port handled 4.1 million tons of cargo in 2012 with 587 ship calls (breakdown according to tonnes handled), with a majority of containerized trade with Europe, but also with Asia and the Pacific.

Source : CCIR* + GPMDLR Annual report
* Chamber of Commerce and Industry of Reunion Island



MARINAS

The Port of la Pointe des Galets is close to Reunion's main trading and industrial port (GPMDLR), and is equipped with all the necessary facilities to accommodate recreational vessels with lengths of up to 17m, and today has some 450 berths over 12 pontoons and 3 docks, with 2 reserved for visitors.

The Port of Saint-Gilles-les-Bains can accommodate 352 boats and has around 50 commercial premises.

The only port in the north-east, **the Port in Sainte-Marie** is home to around 180 recreational and fishing boats. A project to create a powerboat centre associated with a coastal resort is currently underway.

The Port of Saint-Pierre is a small fishing port and marina located near the city centre, with considerable daytime activity and a thriving nightlife. This port of 400 berths is dedicated to both regional tourism and traditional and offshore fishing, as well as yachting and watersports.

Airports



ROLAND GARROS AIRPORT

Located by the sea in the north of the island in the municipality of Sainte-Marie, Roland Garros Airport boasts a privileged location due to its proximity to Reunion's main city, just a few minutes down the RN 2 dual carriageway.

Some figures...

- # A platform of 200 hectares
- # More than 35,000 m² of terminals: 27,000 m² for the passenger terminal (including 21 check-in desks, 4 baggage sorting carousels, 3 baggage delivery conveyors and 6 aerobridges) and 8,000 m² for the freight terminal (depots, warehouses, animal storage area, offices)
- # A 3,200 m runway ideal for large aircraft take-offs and a 2,670 m runway for landings in all weather
- # A capacity of 2.5 million passengers per year
- # The total number of passengers for 2014 was more than 2 million, including 23,383 passengers in transit and 1,990,383 local passengers
- # More than €200 million committed to an investment program running through to 2020 which includes extensions to the east and west of the airport and the reinforcing and widening of the runways

Source : Roland Garros Airport - Annual report 2014



Number of passengers (in 2014)

2
million

Passenger traffic (for 2011)

Ranked 11th
in France

Investments for 2014 (in Euros)

30
million

Large aircraft parking positions

8

Freight capacity / year

40,000
tonnes

ROLAND GARROS AIRPORT FREIGHT TERMINAL

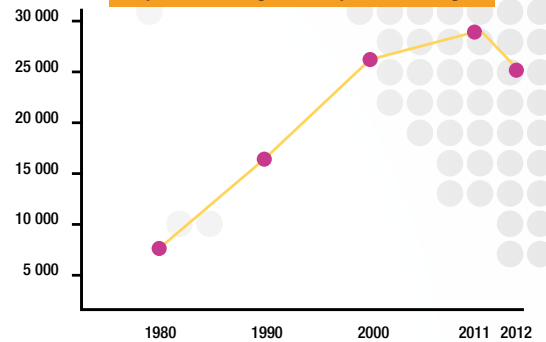


It offers a quality service benefiting from a Border Inspection Post respecting European norms, and handles nearly 30,000 tonnes of cargo each year. It has the official aviation security accreditation as a known consignor and also bears the status of bonded warehouse, making it an efficient partner for companies working in both import and export.

Some figures...

- # 7,510 m² of warehouses (export depot: 3,410 m² / import depot: 4,100 m²)
- # 5,200 m² of offices
- # 2 cargo nose-in parking areas
- # 20 cargo handling engines (tractors and forklifts for both runway and warehouse)
- # Refrigerated depots
- # 40,000 tonnes/year of nominal capacity

Imported Freight & Exported Freight



Office
space

5,200 m²

Postal
air freight
(for 2014)

5,979
tonnes

Air Freight
traffic (for 2012)

Ranked 6th
in France

Freight traffic
(for 2014)

26,503
tonnes

Source : Roland Garros Airport

PIERREFONDS AIRPORT



Located in the south-west of the island in the municipality of Saint-Pierre, it is devoted to regional traffic, notably with Mauritius.

Some figures...

- # Floor space of 111 hectares
- # An international terminal of 2,500 m² with a handling capacity of approximately 500,000 passengers per year
- # A runway length of 2,100 m (with project to extend to 2,800 m)

International
terminal

2,500
m²

Handling
capacity / year

500,000
passengers

Investment
(for 2009)

€31,230

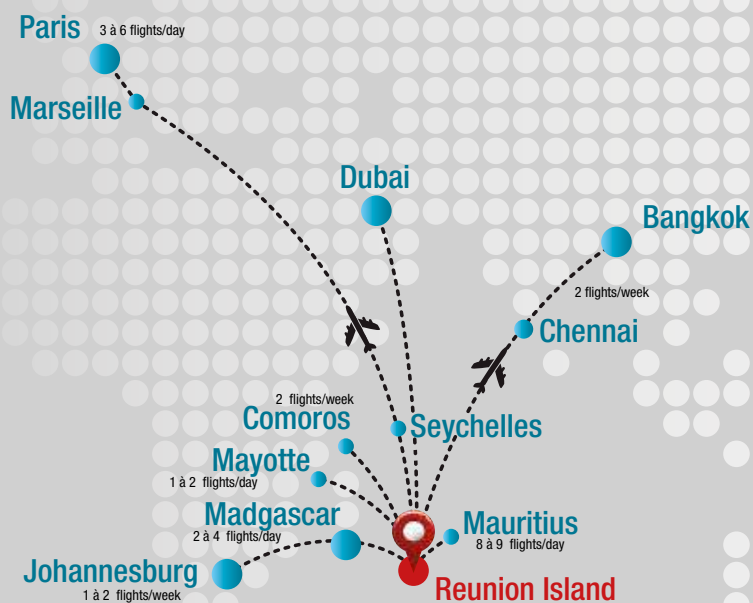
Number of
passengers
(for 2014)

71,625

Freight traffic

22,251
tonnes

Main destinations



FLIGHTS TO EUROPE

Direct flights: France (Paris, Marseille)

Indirect flights: England (London), Italy (Milan, Rome), Switzerland (Geneva, Zurich), Germany (Frankfurt)

FLIGHTS TO THE ASIA-PACIFIC REGION

Direct flights: India (Chennai), Thailand (Bangkok)

Indirect flights: China (Hong Kong), India (Mumbai, Bangalore, Delhi), Malaysia (Kuala Lumpur), Singapore (Singapore)

FLIGHTS TO THE INDIAN OCEAN

Direct flights: South Africa (Johannesburg), Mauritius (Plaisance), Madagascar (Tamatave, Tananarive, Nosy Be, Diego Suarez, Sainte-Marie), Mayotte (Dzaoudzi-Pamandzi), Comoros (Moroni)

Indirect flights: United Arab Emirates (Dubai), Seychelles (Mahé)

Digital infrastructures

respecting international norms

Connected to the rest of the world via satellite and the underwater SAFE cable (South Africa – Far East), Reunion is also connected by underwater fibre optic cables:

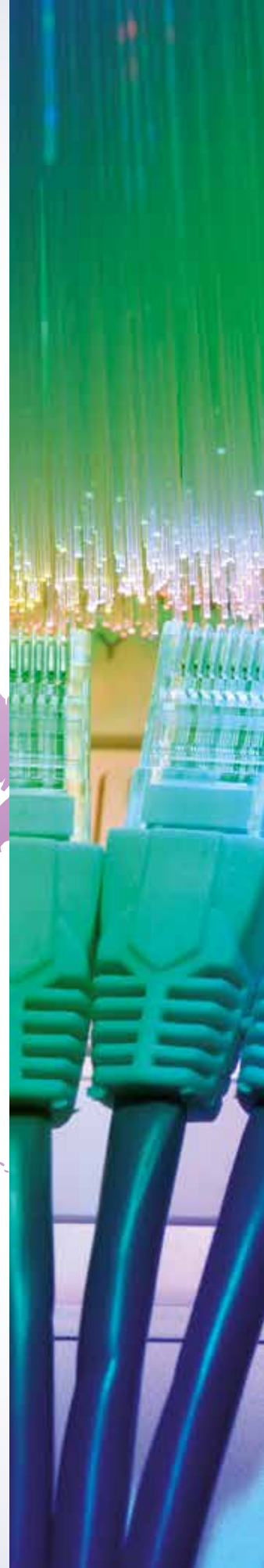
LION* I, connected to Madagascar and Mauritius

LION II, which joins cable LION I in the north and stretches out towards Mayotte and Kenya.



- SEACOM
- LION I
- EASSy
- SEGANET
- SAT3 / WASC / SAFE
- LION II

* Lower Indian Ocean Network



Regional Broadband Network

The island's mobile telephone coverage is more than 95%, with continuity across Europe and the Indian Ocean.

In an aim to improve the quality and performance associated with their activities, establishments in Reunion Island have initiated the development of thematic networks across different domains, with some in conjunction with national networks.

Examples:

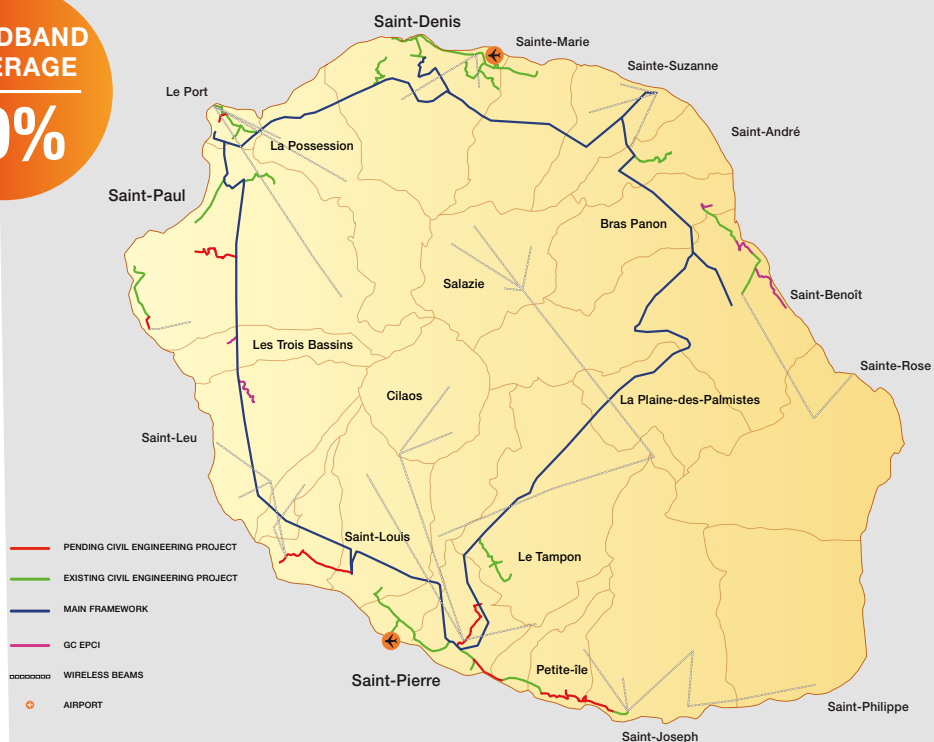
- # Dematerialization projects for administrative procedures, supported by local authorities
- # Communication platforms between schools and parents, connecting high schools to the network
- # Development and networking of digital public spaces
- # Implementation of a regional oncology network
- # Integration within the National Telecommunications Network for Technology, Education and Research (RENATER) via the University of Reunion

BROADBAND
COVERAGE

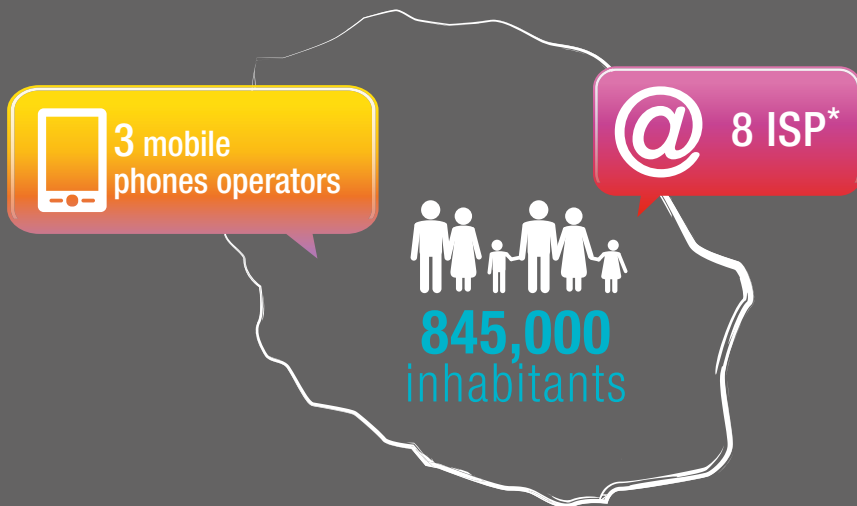
99%

Regional Broadband Network

GAZELLE

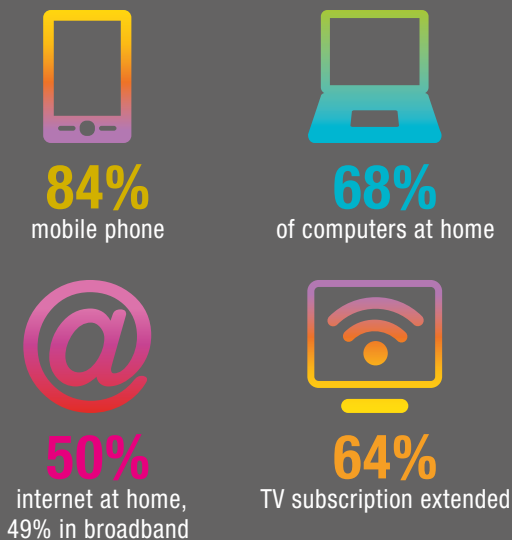


Some figures...



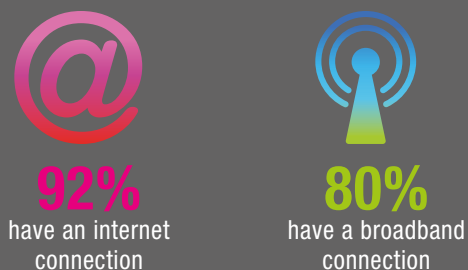
*Internet Service Provider
Source: ARCEP study in July 2013

An equipment rate for households in Reunion in constant development :



Broadband offers of up to 10 Mbps and connection speeds of around 20 Mbps on offer in the form of 'triple-play' packages, including fixed telephony and digital television

Companies are on the network (at least 10 employees)



An extensive road network

in constant development

More than 1,200 km of roads

395 km of national roads
(of which 138.6 km are dual carriageways)
728 km of departmental roads

ROUTE DES TAMARINS (Tamarind Road)

This 34 km stretch of road was completed in 2009, enabling a full dual carriageway connection (four lanes) between Saint-Denis in the north and Le Tampon in the south. In total, the Tamarind Road crosses over 120 gullies.

Saint-Denis > Le Tampon

120 gullies crossed

26 unusual highway structures

4 exceptional highway structures

THE NEW «ROUTE DU LITTORAL»

(Coastal Road)

The largest construction project ever attempted in Reunion, and one of the biggest in France: a 2x3 lane highway, partly as an embankment and partly as a viaduct over the sea.

La Possession > Saint-Denis

Reunion's largest construction project

2 x 3 lanes

A construction project of 1.6 billion euros





Public transport

THE GENERAL COUNCIL'S INTER-CITY NETWORK OF YELLOW COACHES KNOWN AS «CAR JAUNE»

It primarily serves cities around the island's coastline and up in the hills on the west coast.

There are 17 coach routes, a fleet of about 84 vehicles and some 238 bus stops

URBAN PUBLIC TRANSPORT NETWORKS BY MICRO REGION

NORTH > Citalis NETWORK

65 bus routes, 179 vehicles, 1,200 bus stops

EAST > Estival NETWORK

42 bus routes, 44 vehicles, 3,000 bus stops

SOUTH > Carsud NETWORK

43 bus routes, 63 vehicles, 2,196 bus stops

Alternéo NETWORK

56 bus routes, 156 vehicles, 2,331 bus stops

WEST > Kar'Ouest NETWORK

67 bus routes, 156 vehicles, 1,760 bus stops

THE TRANS ECO EXPRESS PROJECT (TEE)

51 bus routes, 188 vehicles

The TEE program was launched in 2010, and aims to provide Reunion with a modernized, efficient and top quality transport network, in order to better serve the travel needs of the Reunionese population across the four corners of the island.

Innovative economic activity zones

with international horizons

Reunion Island is home to 72 activity zones (2012) covering a surface area of about 974 hectares. Plots directly related to the economy account for about 70% of this area, or 673 hectares, and their purpose is often multiple (artisanal, industrial, commercial). More than 60% of activity zones are therefore occupied by the production sector, more than 20% by the commercial tertiary sector and finally, more than 15% by the skilled services sector.

Reunion's 72 activity zones (ZA) cover an average surface area of 14 hectares. They are concentrated across four regions.

IN THE WEST,
spread out between
Le Port
La Possession / Cambaie

21 ZA
356 ha

IN THE SOUTH,
spread out from
Etang-Salé
to Saint-Philippe

24 ZA
233 ha

IN THE NORTH,
mainly located
to the east
of Saint-Denis

17 ZA
202 ha

IN THE EAST,
located between
Saint-André and
Saint-Benoît

10 ZA
63 ha

Development costs (excluding cost of land) of activity zones in Reunion are between €45 and €65 per m², and the marketing prices range from €80 to €150 per m².

Measure 8.01 «Creation of business real estate and business parks» from FEDER* funds promotes the development of business zones and therefore contributes to growth and competition among business by offering them a better environment at a cost comparable to that of mainland France.

It aims to increase the range of spaces available for financial use in terms of properties and buildings built by developers for local and external business tenants, at a cost comparable to that of mainland France.

It must also contribute to the construction of the urban space.

*FEDER : European Regional Development Fund

Opening up to the international scene

Areas in and around the port are primarily dedicated to sectors such as logistics, distribution, construction and manufacturing activities. Examples: The 'ZAC Environnement' (joint development zone), dedicated to the activities of recovery and recycling of waste (30 hectares), and the 'ZAC 2000' (62 hectares).

Areas close to the airports (Roland Garros / Gillot in the north and Pierrefonds in the south) are home to tertiary and logistics services required for export activity.

The Gillot Airport Activity Zone covers 25 hectares, hosting a business park, an activity zone and a logistics zone bringing together businesses connected to the cargo terminal.

The Pierrefonds Airport Activities Zone is under construction. Eventually, this major project will cover 100 hectares and become an economic zone for environmental purposes, bringing together structural facilities (trading centre, logistics hub, airport...), cultural and tourist facilities (conference centre, exhibition hall, auditorium, multiplex...), and commuter connections promoting eco-friendly public transport.

Innovation, research and new technology

Dedicated to the development of activities with high added value, the TECHNOR and TECHSUD technology parks (respectively in the north and south of the island) are prime sites both for their quality (communication networks, common services, support services) and for their proximity with the island's research and training communities (University Institutes of Technology, the University and engineering schools). Their activities mainly revolve around digital, agri-food, health, pharmaceutical and biomedical domains, biotechnology, the environment, energy efficiency and new energies.

The TECHNOR Technology Park is home to sixty companies across an area of 36 hectares to the east of Saint-Denis. It notably includes the CYROI * technological platform that hosts research programs for health, and can accommodate up to four innovative start-up companies in the field of bioscience.

The TECHSUD Technology Park, located in the district of Terre-Sainte, between the GHSR **, the University Campus of Saint-Pierre and the road connecting Saint-Pierre to Saint-Joseph, in a strategic position at the heart of a rapidly developing economic zone ('ZAC Océan Indien') and near express highways. The proximity of Pierrefonds airport is also a real advantage. This 4.2 hectare Activity Centre boasts HQE standards ***, with 110,000 m² for offices and services.

Agri-food and craft trades

Industrial and artisanal areas of the island make it possible to consolidate the expertise of both food supply chains (especially in the south with the presence of the slaughterhouse and the wholesale market in the 'ZI3' industrial zone, benefitting from quality internal networks – streets, lighting, water treatment) and artisanal sectors (especially in the east with the specialist wood and carpentry division spread across 15 hectares).

The wood and carpentry division, located close to the major roundabout in St. Benoit (also known as 'Rond-point des Plaines'), brings together the major players in the wood industry: sawmills, processors, exhibitions, commercialization and training. It provides companies with 19 workshops covering a total surface area of 5,000 m² as well as 1,000 m² of office space at very attractive rates, equipped with quality sound and enhanced thermal insulation.



Renewable energy and the environment

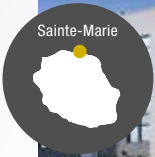
The 'ZAC Environnement' in Le Port, located by the banks of Rivière des Galets, is home to activities and services related to the environment. Spread over 30 hectares, it is especially intended to accommodate facilities for the treatment, disposal and recycling of waste. It serves to highlight today's concerns related to sustainable development.

An environmental business cluster is also planned in the technology park of Saint-Denis with a focus on energy efficiency and the development of alternative energy sources.

The creation of an energy cluster, in relation with the renewable energy sector is underway, including the current coal-bagasse Bois Rouge power plant in Saint-André, notably with the implementation of new projects around the production of 'clean energy'.

Activity zones in Reunion



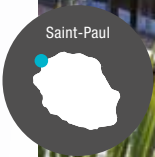


Sainte-Marie

LA MARE BUSINESS DISTRICT

Real estate development project following the restoration of the old sugar factory in La Mare

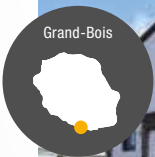
- # Close to the international airport, dual carriageway and the main town
- # 30,000 m² of fitted and equipped offices
- # 5000 m² of central public space and plenty of parking spaces
- # **Services:** Restaurant, banks, nursery and a fitness centre



Saint-Paul

SAVANNAH BUSINESS DISTRICT

- # More than 6000 m² of offices
- # Close to the shopping mall, the multiplex cinema in Cambaie, sports and leisure facilities, the dual carriageways, services and shops in the city centre
- # **On-site:** choice of several restaurants, a bank, and a pharmacy

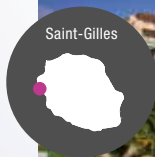


Grand-Bois

CAP AUSTRAL ACTIVITY ZONE

Installed following the restoration of the old sugar factory in Grand-Bois

- # Close to services and shops in downtown Saint-Pierre, at the heart of what will be the future town centre of Grand-Bois
- # Offices of between 90 m² and 180 m²
- # Commercial premises of between 30 m² and 140 m²
- # Numerous car parks, easy access and eventually equipped with public facilities (media library, nurseries)



Saint-Gilles

MONT ROCQUEFEUIL ACTIVITY ZONE

- # Close to major roads (RN1 and the Tamarin Road), the city centre of Saint-Gilles and the seaside resort area in the west
- # **Nearby:** pharmacy, doctors, supermarket, post office, HQE school



SOUTHERN LOGISTICS PLATFORM

Logistics hub in the South, offering permanent or temporary storage facilities.

Near Pierrefonds Airport

In the heart of the south of the island, 10 minutes from industrial areas and major shopping centres

25 minutes from Saint-Paul

85,000 m² of land, 27,500 m² of constructions, 9,500 m² of cold storage capacity (including 5,700 m² of freezer space) and 18,000 m² of dry storage space.

10 m high storage capacity

Storage Capacity : 20,000 m³ (dry) and 10,000 m³ (refrigerated)

Equipped with the latest technology, with a guarantee of high security and quality in the production of refrigerated goods and inventory management

Equipped to accommodate 60 refrigerated containers at any one time

Equipped with a stacker and trailers

facilitating docking and container management



INTER-MUNICIPAL BUSINESS PARK

Business incubator in the south, respecting HQE norms and simultaneously accommodating up to 50 companies across a surface area of around 12,000 m²

Near the RN1 dual carriageway, ideally located with easy access to the west and north of the island, just minutes away from Saint-Louis and less than a quarter of an hour from Saint-Pierre



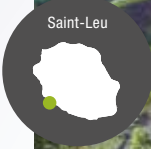
'TRIANGLE' BUSINESS PARK

Inter-municipal activity centre hosting up to twenty companies

A surface area of 7.5 hectares

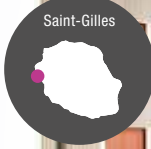
Located between the Technor technology park and the Commune-Primat district, just further up from the Boulevard Sud and the Ravine du Chaudron

An excellent site offering quality facilities (communication networks) and close to Technor services



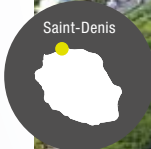
'LE PORTAIL' ECO-BUSINESS PARK

- # Accessible directly from the Tamarin Road. Just 15 minutes from Saint-Paul and Saint-Pierre
- # Hub for tertiary activities such as crafts, logistics, industrial and commercial services
- # **Offices:** from 50 m² to 700 m²: completely modular in a landscaped park with views of the mountain and sea
- # **Activity centre:** from 80 m² to 800 m²; turnkey premises with 5.5m high ceilings and options for mezzanine conversions, offices with sea view and secure parking



'TRAPÈZES'

- # Easy access from the Tamarin Road or the RN1 dual carriageway
- # **Building plots** in artisanal zone with storage area for containers
- # Business premises with surface area of between 150 m² and 320 m², options for mezzanine conversions, car park, high ceilings, **ideal for handicraft workshops and storage**
- # **Offices:** partitioned or open space, bio-climatic design, plenty of parking



TECHNOR TECHNOLOGY PARK

- # **36 hectares** in the district of CERF in Saint-Denis, with over 20 buildings
- # Close to the airport, the University, the 'Triangle' zone, the Boulevard Sud and the city centre



TECHSUD TECHNOLOGY PARK

- # **At the heart of the ZAC OI** (joint development zone)
- # 6,300 m² divided into sections ranging from 50 m² to 650 m²
- # **Close to** the university campus, many restaurants and city centre services, and the hospital
- # Parking, energy-efficient buildings
- # **Close to businesses in the digital sector and the research community**

REUNION ISLAND, REGION OF EXCELLENCE in terms of training, research, development & innovation



Setting up in Reunion Island...

Also means opting for a quality offer of training and education

The quality of teaching is well-recognized in Reunion. Combined with a quality workforce, this becomes a distinct advantage when it comes to choosing a location for your business.

- # An academy of the French Ministry of Education and Research
- # A high-level European training framework: a pool of expertise with all the qualifications necessary for your business
- # A young and dynamic population, open to the world: 40% of the population are under 25 years old
- # Sound choices for training, with a comprehensive range of courses from vocational training to tertiary education, structured networks of excellence, and modern facilities - all thanks to additional public funding from the EU, the French government and local authorities
- # More than 9,000 students passing the French Baccalaureate and 3,500 receiving higher education diplomas each year, including more than 1,400 with either three or four-year degrees (Bac +3, Bac+4) or beyond (Masters, PhDs)
- # Each year, nearly 16,000 students pursue post-baccalaureate studies in Reunion
- # A skilled and trained workforce across several themes and leading sectors: agriculture, crafts, agri-food, trades in automobile and transport, logistics and transport, fisheries and vocations at sea, trades in tourism, hospitality and catering, architecture, fine arts, international business, health, etc..
- # A large proportion of diplomas come from higher education: in terms of graduate training, Reunion boasts a top quality environment, open to the needs of the local economy as well as to the reality of international commerce. It is now possible to benefit from high-level training in various specialties

UNIVERSITY OF REUNION ISLAND

A European university

As a key player for training and education, the University of Reunion instructs around 12,000 students each year, following the European three cycle curriculum of bachelor's, master's and doctoral degrees, but also offers vocational degrees, work/study training courses, diplomas from the University of Technology and engineering courses.

A DIVERSE SELECTION OF TRAINING COURSES AND A WIDE RANGE OF SUBJECTS... MORE THAN 140 DIFFERENT DIPLOMAS ARE ON OFFER

5 TRAINING AND RESEARCH UNITS

Faculty of Law, Economics and Management
Faculty of Science and Technology
Faculty of Arts and Humanities
Faculty of Human Sciences and the Environment
Faculty of Medicine

@ For further information: www.univ-reunion.fr

4 INSTITUTES

Institute of Business Administration (IAE)

Business Management, Tourism, Marketing, Business Development, Human Resources Management, Engineering Sciences and Financial Accounting...

@ For further information: www.iae-reunion.fr

University Institute of Technology (IUT)

Biological Engineering, Civil Engineering, Business and Public Administration, Networks and telecommunications...

@ For further information:

Ecole Supérieure du Professorat et de l'Éducation [School of Teaching and Education]

@ For further information: espe.univ-reunion.fr

Confucius Institute

Cultural and educational non-profit-making public institution, aimed at spreading the Chinese language and culture around the world.

@ For further information: confucius.univ-reunion.fr

AN APPRENTICE TRAINING CENTRE

Quality / Health / Safety / Environment, Networks and Telecommunications, E-commerce, Business Management, Tourism and Hospitality, Communication, Sustainable Agriculture...

THE INDIAN OCEAN HIGHER EDUCATION ENGINEERING SCHOOL OF REUNION - THE ESIROI

Overseas France's first engineering school, certified by the Engineering Accreditation Commission (CTI): opening up to the international scene, and with modern facilities and laboratories.

It provides training for engineers in three specific domains :

«Telecommunications Services, I.T. and Multimedia»
«Innovation and Integrated Agri-Food Development»
«Environment and Sustainable Construction»

@ For further information: www.esiroi.univ-reunion.fr





STRUCTURES OF HIGHER EDUCATION TRAINING

Distinguished and specialized further education establishments covering a range of disciplines

BUSINESS, SALES, MARKETING, MANAGEMENT...

- # Business Management School (EGC)
- @ For further information: www.egc-reunion.re

HEALTH

- # Training schools for paramedical and social vocations

ARCHITECTURE IN A TROPICAL ENVIRONMENT

- # Reunion School of Architecture

ARTS

Visual artist, interior designer, set designer, art director, graphic designer, lay-out artist, cultural mediator, gallery owner..

- # Reunion School of Fine Arts (ESA)
- @ For further information: www.esareunion.fr

IMAGE AND NEW MEDIA

Computer graphics, 2D/3D animation, post-production, web design and multimedia, audiovisual and cinema.

- # ILOI (The Institute of image of Indian Ocean) boasts exceptional facilities, the world's largest cyber-dome and more than 300 graphic design workstations
- @ For further information: www.iloi.fr

I.T AND DIGITAL STUDIES

- # I.T. Engineering School SUPINFO
- @ For further information: www.supinfo.com
- # L'Institut de Polyinformatique de Paris et Tetranergy
- @ For further information: www.tetranergy.com

Setting up in Reunion...

Also means opting for a region that boasts establishments for education and professional training, covering a wide array of subjects.

A COMPREHENSIVE NETWORK OF TRAINING CENTRES

12 APPRENTICE TRAINING CENTRES (CFA) EQUIPPED WITH MODERN INFRASTRUCTURE AND MATERIAL

INSTITUTIONS OFFERING EXTENSIVE TRAINING COURSES IN SPECIALIZED SUBJECTS

Training for careers in agricultural production, agri-food processing and marketing, landscaping and the environment, equestrian activities, machinery and water management

The Local Public Establishment of Education and Agricultural Vocational Training (EPLEFPA)

@ For further information: www.reunion.educagri.fr

Training for careers in tourism, hospitality and catering

Le CENTHOR

@ For further information: www.ccifformation.re

Training for careers in automotive and transport trades

Training Centre for Automotive and Transport Trades (CFAT)

Training for careers in commerce, fisheries and marine engineering

The Maritime School of Learning (EAM)

@ For further information: www.ecolemaritime.fr

Further Education Centre for Industrial Engineers specialized in Construction and Public Works

Construction Training School at the Centre for Graduate Industrial Studies (EI-CESI)

@ For further information: www.eibtp.re



Setting up in Reunion...



Also means opting for a region with strong potential for research and innovation

As a tropical island and European territory, Reunion has significant geo-strategic assets and material, human and financial resources, thus creating an environment conducive to developing businesses in Research, Development and Innovation.

AN INCOMPARABLE NATURAL ENVIRONMENT 'Source' of research and development

- # One of the world's 34 biodiversity hotspots, with its «Pitons, cirques and ramparts» listed as a UNESCO world heritage site
- # A national park, a marine nature reserve, an active volcano and an ideal stepping stone to access the French Southern and Antarctic Lands (and its scattered islands)
- # Exceptionally dynamic examples of terrestrial and hydro meteorological phenomena: an opportunity for research and observation for areas across the Indian Ocean zone
- # A geographical position with significant advantages for studying how wildlife adapts to an intertropical environment
- # An insular nature imposing exemplary strategies for sustainable management of energy, food, waste, etc.

CURRENT POLICIES

SMART SPECIALISATION STRATEGY

To overcome the crisis, the European Union would like to reveal the growth potential of its different territories. As such, access to structural funds is now dependent upon the drafting of a «programme of economic change»: S3. This is based on 3 principles:

- The concentration of local resources on a limited number of priorities, activities and technology sectors that have a critical mass or a competitive advantage.
- Differentiation: moving from a rational of imitation in order to offer something unique, founded on local requirements.
- Integration: strengthening the openness of the economy with world trade and its export potential.

For almost 15 months, participatory workshops bringing together economic, scientific and institutional players have demonstrated a shared ambition: to respond to the current and future challenges facing Reunion, a driver of product development and of exportable solutions, generating both prosperity and employment. Three priorities were identified:

- The tropical bio-economy
- Experiential ecotourism
- The agility of the region

To put this intention into practice, 50% of FEDER (Fonds européen de développement régional [European Regional Development Funds]) have been dedicated to innovation and research, digitisation, increasing business competitiveness and energy transition.

@ For further information: www.innovonslareunion.com

A FIRST CHOICE DESTINATION for your RDI* activities

In conducting your R & D activities in Reunion, you will benefit from the very best in human, material and financial resources throughout your project. You will be able to test and compare your innovations on a developed local market - a real springboard for European and international markets.

*Research, Development and Innovation



EUROPEAN EXCELLENCE in the heart of the Indian Ocean

*Indian Ocean Area

FRENCH RESEARCH CENTRES AND INSTITUTES

In addition to its University for regional vocations (ZOI*), Reunion is also home to the major French research centres and institutes: **CIRAD** (Centre for International Cooperation in Agronomic Research for Development), **IRD** (Research Institute for Development), **IFREMER** (French Research Institute for Exploitation of the Sea) and **BRGM** (Bureau of Geological and Mining Research). **Other organizations exist here in association with local laboratories: INSERM** (National Institute of Health and Medical Research) and its **Research Centre for Clinical Epidemiology**, **CNRS** (National Centre for Scientific Research), **IPGP** (Paris Institute of Earth Physics), **Météo-France**...

CUTTING EDGE RESEARCH EQUIPMENT

Reunion is home to major research infrastructures including:

THE PHYSICAL ATMOSPHERE OBSERVATORY IN LE MAIDO UP AT AN ALTITUDE OF 2,200 METRES

Facilities: a laboratory space of 700 m² (chemical measurements, measurements of physical parameters), an area to perform outdoor experiments, 3 lidars (laser telescopes including one which is 5 metres high), sun photometers, spectrometers, radiosondes, profiler radars, etc.

Long term contribution to Experimental Observation Systems for Environmental Research (SOERE).

@ For further information: opar.univ-reunion.fr

SEAS-OI (SATELLITE AIDED ENVIRONMENTAL MONITORING IN THE INDIAN OCEAN)

The SEAS-OI is a centre of excellence for high resolution spatial remote sensing for the management of territories in the southwest Indian Ocean.

@ For further information: www.osur.univ-reunion.fr

BIOTECHNOLOGY PLATFORM: CYCLOTRON REUNION INDIAN OCEAN (CYROI)

CYROI is a technology platform in the field of biosciences: emerging infectious diseases, metabolic diseases (diabetes, obesity, high blood pressure...), enhancement of terrestrial and marine biodiversity. On a site spanning over 4,500 m², it has a cyclotron which allows the production of pharmaceutical drugs. It welcomes researchers, provides services and hosts start-up biotech companies.

@ For further information: www.cyroi.fr

TECHNOLOGICAL PLATFORM: PLANT PROTECTION DIVISION (3P)

This platform is managed by CIRAD, and is specialized in plant research and experimentation. 3P works in the following areas: plant health, pathology and molecular genetics, ecology, biological resources, training and hosting start-up companies.

@ For further information: umr-pvbmt.cirad.fr/plateformes/3p

PARTNERS AND KEY CLUSTERS for innovation in Reunion

Institutions for accompaniment,
consulting and promotion



NEXA

Regional Agency for Development, Investment and Innovation, first port of call for innovative project leaders

NEXA accompanies project leaders from the worlds of both research and private businesses in order to help them obtain new sources of funding and assist in the financial structuring of their actions.

Nexa offers a full range of services for innovative projects at seed stage or at launch:

- # Financial, legal and communications expertise
- # Optimal networking with experts of innovative business environments (clusters, incubators...)
- # Pooled services (monitoring, e-reputation...)

@ For further information: www.nexa.re



THE CELLULE EUROPE (THE EUROPE COMMITTEE)

Created in 2013 by NEXA and the University of Reunion to secure the link between European research programmes and the Reunion ecosystem, the Cellule Europe is a shared tool of Reunion RDI (Research, Development and Innovation).

As a facilitator the Cellule Europe's role is to assist university laboratories, research centres and clusters, such as businesses, in order to respond to the call for national and European research and innovation projects like the Horizon 2020 programme.

It conducts awareness campaigns, overseeing and collating calls for proposals to local talent and also assists with drafting proposals, partner research and monitoring projects.

@ For further information: www.innovonslareunion.com



THE TECHNOPOLE OF REUNION

Making innovation into a real development tool in Reunion

Board Member of RETIS, the Réseau Européen Transnational pour L'Inclusion Sociale or the European Transnational Network for Social Inclusion, which brings together the Technopoles, Incubators and the CEEI, Centres Européens d'Entreprises et d'Innovation, or European Centres for Businesses and Innovation, as well as various competitive hubs. The Reunion Technopole helps ensure the success of the following missions:

Tailored financial assistance with setting up innovative businesses through the regional Reunion incubator.

Networking of those involved

Facilitation at technology parks like Technor in Saint-Denis and Techsud in Saint-Pierre

@ For further information: www.technopole-reunion.com

Clusters and Innovation Hubs

The ocean



MARITIME CLUSTER

Its role is to promote French maritime activities and related interests in the southwest Indian Ocean and explore development opportunities for the sector.

REGIONAL MARITIME CLUSTER

(under development)

The Regional Maritime Cluster aims to bring together scientific expertise (fundamental research, research and development, innovation, training...) relating to the marine environment, and to bring together teams of several national and local research organizations in this field.

Construction in the tropics



CIRBAT

(Centre for Innovation and Research for Tropical Construction)

Adapting and implementing construction materials, norms governing the building industry with its tropical constraints, and providing companies with access to technical research, dissemination of knowledge, technical training and assistance for innovation.

@ For further information:
www.cirbat.re

The environment



GREEN CLUSTER
(Regional Grouping of Companies Committed to the Environment)

It aims to identify collaborative innovation projects, in order to transform them into opportunities for job creation, local competitiveness and economic development.

In Reunion, a dynamic group of pooled companies work together in structures such as clusters and divisions for competitiveness and innovation. 7 clusters are active in specialized areas.

Energy



TÉMERGIE

(Technology for Efficient Energy, Renewable Energy and Isolated Energy Management)

Support for R & D projects, development of products and processes respectful of the environment using natural tropical resources in fields of agri-food, biotechnology and health.

@ For further information:
www.temergie.com

Valorisation of natural tropical resources



QUALITROPIC (Cluster for Innovation and Natural Tropical Resources)

Support for R & D projects, development of products and processes respectful of the environment using natural tropical resources in fields of agri-food, biotechnology and health

@ For further information:
www.qualitropic.fr

Digital



DIGITAL REUNION

Digital Reunion represents the players of the local Digital sector and supports those aiming to develop and promote the industry in Reunion.

Its work helps to support innovation, to foster regional, national and international cooperation and to make Reunion a region of excellence when it comes to new technology.

@ For further information:
www.digitalreunion.com

Setting up in Reunion...

Also means benefiting from highly attractive financial or fiscal support measures for RDI

For the development of your Research, Development and Innovation activities in Reunion, a wide range of local, national and European support measures is available.

Reunion also benefits from traditional national funding, specific measures intended for French overseas regions and a European Operational Program committed to Research, Development and Innovation.

Focus on several national funding measures for innovation

«CIR» TAX CREDIT FOR RESEARCH Tax reduction for RDI spending

France's offer of tax support for research is among the most attractive in Europe: the Tax Credit for Research.

It represents **50% of spending up to €100 million and 5% thereafter** for businesses that allocate spending for basic research and experimental development (R & D).
The limit is €2m per company per year, increased to €12m for research assigned to organizations with no dependent links to the company.

FUNDING FOR YOUNG INNOVATIVE COMPANIES (JEI)

The five conditions to be classified as a Young Innovative Company are : being a SME no older than eight years old, having a minimal volume of R & D spending, being independent and with real innovative activity.

BENEFITS

Exemption for 2 years of corporate taxes on profits made:

- Exemption of 100% for the first year or the first period of tax credit receipt,
- Exemption of 50% for the following period or tax year

Cap: exemption limited to €200,000 over three consecutive years.

RECRUITMENT SUPPORT: CIFRE (Convention for Industrial Research Training)

The CIFRE program enables companies to receive financial assistance for the permanent or temporary (3 years) recruitment for a PhD student whose research, supervised by a public research laboratory, will lead to a thesis.

BENEFITS

On behalf of the French government, the National Association for Research and Technology (ANRT) will provide the company with a financial grant for 3 years, amounting to €14,000 / year. The starting salary may be no less than €23,484 gross per annum.

@ For further information concerning national funding for Innovation: www.enseignementsup-recherche.gouv.fr

BPIFRANCE SUPPORT

Direct aid to innovation to share the risks inherent in research, development and innovation of SMEs and thus promote access to private funding. Accompaniment, expertise and services related updates ... a mission of general interest on behalf of the State and in partnership with the Regions.

Focus on several Bpifrance funding measures*

AID FOR INNOVATION FEASIBILITY AND TECHNOLOGICAL PARTNERSHIPS

Up to €50 k

AID FOR DEVELOPMENT

Reimbursable advances with zero per cent interest if successful, or in any case zero per cent uncapped interest loans. Bonuses on rates for aid concerning collaborative projects

AID FOR FIRST INNOVATIVE PROJECT (APPI) > UPSTREAM PHASE

Accessible to SMEs, this aid is used to validate an innovative feature and / or technology involved in the development of a product, a market or a strategy.

AMOUNT

The subsidy is at a maximum of 80% of the net amount of the external service covered by the support measure, capped at €10,000

PRE-FINANCING FOR CIR (TAX CREDIT FOR RESEARCH) 'PREFICIR' > R & D PHASE

The PREFICIR enables small and very small companies of more than 3 years old, having benefited at least once from the Tax Credit for Research, to access cash flow to cover their research and development expenses from the year in which they are incurred, before the corresponding CIR is allocated the year after.

RATE

80% of the estimated CIR in respect of research and development spending incurred in the calendar year, between €30k and €1.5 million over a maximum period of two years

LOAN FOR INNOVATION (PPI) > DOWNSTREAM PHASE

The Loan for Innovation is aimed primarily at SMEs of more than three years bearing an innovative product for commercialization, having benefitted for less than three years either from an RDI grant or a public subsidy supporting the innovation.

FINANCED EXPENDITURE

Financing of intangible expenditure related to the industrial and commercial launch of an innovative product: recruitment, intangible and tangible investment, marketing, organizing and arranging distribution, travel, trade shows, product localization, and increase in working capital...

AMOUNT

From €30,000 to €1.5m, up to a maximum of twice the company's equity and quasi-equity

@ For further information concerning BPI grants: www.bpifrance.fr or www.afd.fr

*On the condition of Stockholders' equity considered as sufficient during the instruction. Bpifrance

Focus on several regional funding measures for innovation

Innovation is one of the priorities of the Regional Council of Reunion, which offers solid support to innovative companies who are part of the island's strategic business areas (Digital, Tourism, Agri-food and Renewable energy / Environment) either through attractive financial measures for equity or with its partners in the European Regional Development Fund (ERDF).

@ For further information: www.regionreunion.com or www.entreprise-reunion.re

SUPPORTING BUSINESSES AND THEIR INNOVATION PROJECTS

BENEFICIARIES:

COMPANY*

AMOUNT: 11,98 M (direct grant + engineering funding)

SELECTION CRITERIA:

To receive funding projects must fall under one of the following criteria:

- **Experimental development**
- **Industrial research**
- **Innovation:** innovation is the implementation of a product (goods or services), a new or significantly improved process, a new marketing method or a new method of organisation into the practices of a business, an organisation, the work place or external relations.
- **Organisation innovation**
- **Process innovation**

Innovative products and services, high added value, likely to conquer new markets in the different areas of S3.

Business and employment development potential in Reunion and significant economic benefits (jobs created and kept, growth in business activity, etc.)

Projects involving local players (businesses, research bodies, associations...) from the industry.

RATE :

Feasibility study :

Small businesses: 70%

Medium-sized businesses: 60%

Large businesses: 50 %

Any entity undertaking financial activity is considered a business, regardless of its legal standing, for example those involved in trade or other activities on an individual or familial basis, partnerships or associations that regularly undertake financial activity (framework exempted by notification no. SA.40391 relating to assistance for research, development and innovation (RDI) for the period 2014-2020)

Industrial Research and Experimental Development:

Small businesses

- Industrial research: 70%
- Experimental development: 45%

As part of a workforce collaboration and/or a wide dissemination of the project results, 80% and 60% respectively

Medium-sized businesses

- Industrial research: 60%
- Experimental development: 35%

As part of a workforce collaboration and/or a wide dissemination of the project results, 75% and 50% respectively

Large businesses

- Industrial research: 50%
- Experimental development: 25%

As part of a workforce collaboration and/or a wide dissemination of the project results, 65% and 40% respectively

ELIGIBLE EXPENDITURE CAPS:

- individual or collaborative projects for which the eligible expenditure is:
 - less than €50,000, not eligible for the aid package
 - more than €500,000, capped at this same amount*
- €100,000 for external businesses for projects involving companies outside of Reunion*
- €80,000 per employee per year for gross salaries
- €1,000 (excl. tax) per person per day for research costs (outsourced)

**excluding projects that may be structural or strategic to the industry in question.*

INCREASING RDI EFFORTS FOR BUSINESSES THROUGH THE RECRUITMENT OF YOUNG EMPLOYEES

BENEFICIARIES :

Private businesses, public or private research bodies, EPLs (établissements publics locaux [local public establishments]), chambers of commerce.

AMOUNT : €1.80 M

SELECTION CRITERIA:

Recruitment of a doctor within a company or research body with headquarters or premises localised in Reunion.
Recruitment of a doctor who has completed a part of his/her school or university education in Reunion and who has never signed a CDI (fixed-term contract).

Assignment with a maximum duration of 24 consecutive months.
Project in the field of RDI within the priorities of S3.

RATE :

- Public research bodies, EPLs, chambers of commerce, associations not undertaking financial activity (pursuant to annexe V of the framework exempted by notification no. SA.40391 relating to aid for research, development and innovation):

Maximum grant rate: 80%

- For private businesses*, private research bodies or associations with financial undertakings, the below table summarises the level of aid permitted according to the type of activity and the nature of beneficiary for a total eligible cost of 100 (under framework no. SA.40391):

	Small businesses	Medium-sized businesses	Large businesses
Industrial research: (common case)	70 %	60 %	50 %
Industrial research - workforce collaboration or a wide dissemination of the project results	80 %	75 %	65 %
Experimental development: (common case)	45 %	35 %	25 %
Experimental development - workforce collaboration or a wide dissemination of the project results	60 %	50 %	40 %

CAP :

€100,000 per post-doctorate recruited for a maximum duration of 24 months (if involving a fixed-term contract at the end of the assignment, otherwise €50,000).



Any «entity undertaking financial activity is considered a business, regardless of its legal standing» (annexe III of the framework exempted by notification no. SA.40391 relating to aid for research, development and innovation).

Extremely ATTRACTIVE investment conditions



Invest in Reunion,

Also means
benefiting
from European and
French economic
activity support
programs,
as well as a whole
range of specific
regional measures

INVESTMENT
GRANTS

up to

€3M

LODEOM

Law for the Economic Development of Overseas France

What is the LODEOM ?

Applicable since year-end of 2008, the Law for the Economic Development of Overseas France (LODEOM) provides measures which are specific to French overseas territories, coming in the form of tax relief and tax exemption, reduction and rebates.

It provides enhanced support to businesses operating in Reunion Island's strategic sectors.



Free Trade Zones (ZFA),

an attractive aid measure

The LODEOM law designates the entire surface of Reunion as a Free Trade Zone.

ELIGIBLE BUSINESSES

In order to benefit from ZFA measures, companies must:

- Employ fewer than 250 employees and report a turnover of less than €50m
- Be subject to a valid tax regime or the regime of micro-enterprises
- Perform an eligible activity as their main occupation (more than 50% of turnover)

In addition, the company must for their part invest in vocational training in order to benefit from ZFA measures.

ELIGIBLE ACTIVITIES

The LODEOM law includes support measures based on 2 key components:

- A general component

Sectors:

Manufacturing
Crafts
Farming

Non-commercial activities:

Accounting
Business Consulting
Engineering
Thematic studies for businesses

- A priority component:

A priority area focused around six strategic themes, which benefit from increased funding.

Renewable energy

The environment

Information and Communications Technology - Digital

Tourism including leisure activities

Agro-nutrition

Activities in research and development

DEDUCTIONS ON TAXABLE INCOME

DEDUCTION RATE	GENERAL COMPONENT	PRIORITY COMPONENT
FROM 01/01/2008 TO 31/12/2014	50%	80%
2015	40%	70%
2016	35%	60%
2017	30%	50%
MAXIMUM AMOUNT OF TAX-EXEMPT INCOME	€150,000	€300,000

ZFA deduction rate on corporate profits over the period 2008-2017

The CET (Territorial Economic Contribution) consists of two contributions, each with their own tax rules.

FEATURES RELATED TO THE TERRITORIAL ECONOMIC CONTRIBUTION (CET)

CORPORATE PROPERTY CONTRIBUTION (CFE)

CORPORATE ADDED-VALUE CONTRIBUTION (CAVE)

Implementing terms

The base of the CFE is the rental value of assets subject to the company's property tax
Deductions apply to the net taxable base of each establishment

Exemptions applicable to the CFE apply to the CAVE

	Year	General component	Priority component
Deduction rate	2009-2015	80%	100%
	2016	70%	90%
	2017	65%	80%
	2018	60%	70%
Cap	€150,000 per tax year	€2M of added value	

MEASURES RELATED TO PROPERTY TAX

DEDUCTIONS FOR PROPERTY TAX ON LAND WITH CONSTRUCTIONS

EXEMPTION FROM PROPERTY TAX FOR UNDEVELOPED AGRICULTURAL LAND

Implementing terms

The right to temporary digressive deductions:

- On the tax base on land with constructions
- For buildings attached to an establishment located in a ZFA
- For businesses that are eligible for CFE deductions

Exemptions only relate to the part of property tax for undeveloped land, applying to municipalities and Public Establishments for Inter-municipal Cooperation (EPCI)

	Year	General component	Priority component
Deduction rate	2009-2015	50%	80%
	2016	40%	70%
	2017	35%	60%
	2018	30%	50%

Tax exemption for productive investments

BENEFICIARIES

Companies or partnerships who invest and whose business activities are eligible.

CONDITIONS

Application for tax assistance is for investment in agricultural, industrial, commercial or artisanal sectors which by their nature come under the BIC (Industrial and Commercial Profits) :

- New productive investments for modern and amortizable tangible assets*
- Software required for the use of eligible investments
- The renovation and rehabilitation of hotels, tourist residences and classified villages which are part of the company's fixed assets (eg, transformation, development or modernization of the property)

**Restrictions imposed by the LODEOM on passenger vehicles*

INVESTMENT BY INDIVIDUALS SUBJECT TO IT**

INVESTMENT TYPE	TAX reduction rate
General cases	50%
Hotel renovation and rehabilitation work in French overseas departments (DOM)	70%
Investments made in the shipping sector	50%
Sector of renewable energy	60%
CAP	€250,000

TAX
REDUCTION
RATE

INVESTMENT BY INDIVIDUALS SUBJECT TO CT***

Any corporate tax reduction is equivalent to the total amount of productive investments made by businesses or of capital subscriptions made in companies.

This tax reduction makes it possible to deduct 100% of the investment profit tax for the year of acquisition.

TAX
INCENTIVES
100%
of the investment profit
tax for the year
of acquisition.

**Income Tax

***corporation tax

Tax exemption for investment in the housing sector

• Tax exemption for social housing

The LODEOM law provides a tax reduction for investment in social housing, applicable to investments made between 27th May 2009 and 31st December 2017.

BENEFICIARIES

Individuals who are both resident and have their tax residence in France

FOR WHICH TYPES OF HOUSING ?

- For acquisitions or housing constructions for rental or for homeownership
- For constructions completed more than 20 years ago and now undergoing rehabilitation

CONDITIONS

Using the tax reduction:

- Granted for the year of completion of housing or acquisition, whichever is later
- Balance carried forward and due over the next five years
- When investing through a company

Investments are eligible when made:

- Directly with no intermediary
- Through a company not subject to corporation tax
- Through a Real Estate Investment Trust (REIT)
- Through a company subject to corporation tax under certain conditions

Cross-compliance:

A fraction of the cost price must be allocated to expenses incurred for investments in renewable energy *

For certain investments, approval is required from the Ministry of Budget and Public Accounts:

Projects concerned:

- Real estate projects exceeding €2m
- Investments made by companies subject to corporation tax, regardless of the amount

**TAX
EXEMPTION
RATE**

Up to **50%**
of the housing
cost price

CAPPED AT

€2,373/m²

Limit applicable
to investments
carried out in 2013

*Equipment for the production of renewable energy and apparatus using a renewable source of energy or thermal insulation materials



- **Tax exemption for investment in rental property in overseas France. (Pinel measures for overseas French territories)**

The Pinel law for overseas France* allows any investors with official tax residence in France to acquire from 1st September 2014 until December 2015, any new or off-plan housing, thus obtaining a reduction in income tax.

BENEFICIARIES

Any French taxpayer investing in a new property located in overseas French territories.

BENEFITS

Tax incentives for investment in rental real estate in overseas France.

- **Tax exemption rate:** 23% of the investment amount
- **Capped at:** a maximum investment of €300,000 over a period of nine years
- **The Pinel measures** for overseas France can result in a maximum of €78,000 in tax cuts, generating €13,000 of tax savings per year over 9 years

CONDITIONS

- The owner of the dwelling must rent out the empty property to be used as a principle residence for a minimum period of 6 years
- The property may not be rented to an ascendant or descendant, or any person from the same tax residence
- The lease commitment must be made within 12 months following the date of completion of the building or of its acquisition, whichever is later



TAX
EXEMPTION
RATE

Up to **23%**
of the
investment amount

CAPPED AT

€300,000
of investments
over a period
of 9 years

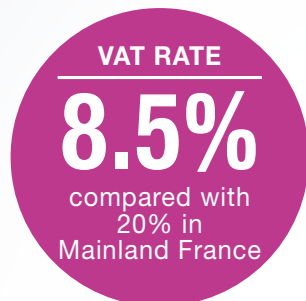
To receive a free personalized study about the Pinel law, delivered by an expert in real estate tax exemption in overseas France, you can carry out a simulation at : www.outremer.loi-pinel-info.org

*According to Article 199.29 of the French General Tax Code

VAT system

VAT is the direct consumer tax paid to the State by individuals or legal entities engaged in economic activities for remuneration.

Benefits of the VAT system in Reunion



This rate is reduced or brought down to 0% for certain necessities.

In Reunion, the VAT measure known as Non-Levied yet Recoverable VAT (NPR VAT) is applicable to certain investments in new assets*.

**Products are listed in the French General Tax Code, Annex 4, Articles 50j and 50k*

System for the exemption from dock dues*

There are two types of exemptions from dock dues:

1. Exemptions by rights: imports of goods in Reunion are exempted from dock dues to the extent that they fall within the exemptions applicable to other law and taxes.

2. Exemptions by deliberations of the Regional Council of Reunion: the imports that meet the conditions set by the decision of the Regional Council of Reunion dated 19 October 2004 are exempted from dock dues.

In this frame, the main exemptions are:

- # The goods listed in articles 50 undecies (hospitality and tourism business only) and 50 du decies of Annex IV of the General Tax Code;
- # The raw materials for local production of furnished properties.

To benefit from an exemption from dock dues in this frame, the importer has to certify that he meets the conditions of eligibility fixed by the Regional council and to have filled the obligations relative to the local producers.

** Dock dues is a special tax applicable to products introduced in Reunion and locally manufactured products. Its normal rate in Reunion is 8.5%. Depending on the nature of the products concerned, different rates may apply.*

For all further information concerning the LODEOM law:



NEXA

Regional Agency for Development, Investment and Innovation

62, boulevard du Chaudron
BP 60 030
97491 Sainte-Clotilde Cedex
Reunion Island, France

Tel.: +262 (0) 262 20 21 21
investinreunion@nexa.re
www.nexa.re

FINANCIAL ACTORS

in Reunion

Reunion's credit institutions are all part of the SEPA project (Single European Payment Area) and employ the European SCT transfer system (SEPA Credit Transfer) adopted in 2008.

This system allows institutions to send and receive money transfers to and from all countries within the European economic area, respecting the same conditions of reliability, speed and price.

In terms of quality and efficiency in the management of liquidity, France has been part of the TARGET 2 project since 2008.

TARGET 2 is a European system of real-time payments for transferring consequential amounts between banks and central banks. It is based on a single shared platform.

Reliable, modern and connected to major financial institutions, Reunion's banking environment provides the resources necessary for the development of economic activity.



SPECIALIZED INSTITUTIONS

For secure money transfers and attractive offers for financing, please find below a list of banks located in Reunion:

COMMERCIAL BANKS

BNP Paribas Réunion // BNP Paribas
www.reunion.bnpparibas.net

Banque Française Commerciale Océan Indien // BFCOI
www.bfcoi.com

Banque de la Réunion // BR
www.banquedelareunion.fr

Banque Postale
www.labanquepostale.fr

MUTUAL SAVINGS AND COOPERATIVE BANKS

BRED Banque Populaire // BRED BP
www.bred.fr

Caisse Régionale de Crédit Agricole Mutuel de La Réunion // CRCAMR
www.ca-reunion.fr

Caisse d'Épargne et de Prévoyance Provence-Alpes-Corse // CEPAC
www.caisse-epargne.fr

Caisse Régionale du Crédit Maritime Mutuel d'Outre-mer // CRCMMOM
www.creditmaritime-outremer.com

CASDEN Banque Populaire
www.casden.fr

The issuing institution for Overseas departments // IEDOM (French public institution in charge of monetary transmission in overseas communities whose currency is the euro and who acts «in the name of, on behalf of, and under the authority of the Bank of France»)

www.iedom.fr

Public Investment Bank (Bpifrance)
www.bpifrance.fr

French Development Agency (AFD)
www.afd.fr

La Caisse des Dépôts et des Consignations* (CDC)
// CDC Réunion Océan indien
www.caissedesdepots.fr

FINANCIAL BUSINESSES

Crédit moderne Océan Indien // CMOI
www.credit-moderne.com

Crédit SOFIDER Océan Indien Groupe BRED
www.sofider.fr // www.bred.fr

Société réunionnaise de financement // SOREFI
www.gemoney-domtom.com/sorefi

NATIXIS FACTOR
www.factor.natixis.com

Compagnie Financière de Bourbon CFB

FORTIS Océan Indien

OCEOR Lease (SLIBAIL Réunion)
// Filiale de la Banque de la Réunion
www.banquedelareunion.fr

Compagnie Générale d'Affacturage (CGA)
www.c-g-a.fr

BRED Cofilease / Filiale BRED
www.bred.fr

CAFINEO
www.commerce.cafineo.fr

Funding measures from the **REGIONAL COUNCIL OF REUNION**



Which aid?*

Regional aid, co-funded by Europe as part of the 2014-2020 Operational Programmes aimed at reducing investment costs incurred by businesses.

They mainly involve:

- The Regional Employment Premium (REP)
- Payment of transports costs
- The development of trade and industry businesses
- Use of soft skills - product competitiveness
- Strengthening of management within the company
- Creating real estate for businesses and business parks (excluding ITI (investissements territoriaux intégrés [integrated territorial investments]))
- Support for strategic sectors through funding business creation and development measures
- Financial aid is governed by European regulations according to company type.

	Small businesses	Medium businesses	Large businesses
Workforce	< than 50 people	< than 250 people	250 people or more
Turnover	Annual or total turnover Annual figures < than €10M	Annual or total turnover Annual figures < than €43M	
Maximum amount of public aid (% of total expenditure)	65%	55%	45%

*Applications must be submitted to the FEDER reception for the Reunion Region or directly to the Reunion Region, according to the aid required

Regional Employment Premium (PRE)

The PRE aims to promote recruitment or the maintaining of existing jobs within eligible SMEs.

BENEFICIARIES

Companies registered with the RCS (French Register of Commerce and Companies) or the RM (French Directory of Trades) in Reunion, eligible for aid in the sectors of industry, tourism, crafts and digital.

ELIGIBLE SPENDING

Recruitment or maintaining of jobs in eligible SMEs.

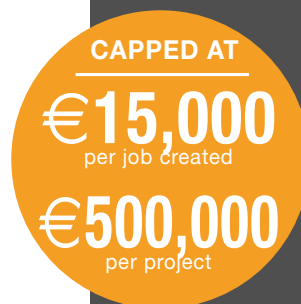
RATE

40% of gross earnings subject to social security contributions paid during a period of:

- 2 years for new permanent employees ⁽¹⁾
- 1 year maximum for new permanent contracts of employees from «underprivileged» social groups
- 2 years maximum for new permanent contracts of employees from «severely underprivileged» social groups

An increase of ⁽²⁾:

- 10 extra points for positions involved in seeking out new business opportunities or innovation
- 20 extra points for the employment of disabled workers



Payment of transports costs

Payment of transports costs is aimed at paying additional costs incurred by local businesses in order to help them benefit from the geographical advantage of companies based in mainland France.

Covering these costs allows businesses to improve the price competitiveness of their products and to find opportunities on external markets.

Component 1: outgoing freight routes

Component 2: incoming product freight routes

BENEFICIARIES

Any business ⁽³⁾ with headquarters or premises situated in Reunion and undertaking: production-processing activity for trade or industry

- activity involving fitting, assembling, making or packaging, involving added local value of at least 20% and a sufficient impact on job creation
- commercial activity where the totality of turnover is achieved externally with products finished, manufactured, packaged or assembled in Reunion

ELIGIBLE EXPENDITURE

The expenditure covered only concerns movement between Reunion and the European Union, namely:

- insurance, airport or port ⁽⁴⁾ handling costs, excess weight ⁽⁵⁾, main cargo, transit fees, storage costs, costs related to putting together a grant dossier and compiling balance sheets. Eligible expenditure is capped at €5,000 and is applicable to fees.



(1) Rules for Regional Purpose Aid, not cumulative with investment aid. (2) These two increases are cumulative when the created job fulfils the two conditions. (3) Applications made by economic interest groups, cooperatives or others will be examined case by case. (4) With regard to the port: storage, lighterage, pilotage and towing incoming/outgoing vessels to and from the port. (5) Evidenced by receipted invoices and customs documents.

The development of trade industry businesses

Aid for the development of the various industries and the strengthening of competition allows for a reduction in the cost of initial capital and thus for a more favourable situation when it comes to material investment.

Indeed, one of Reunion's competitive advantages lies in its capacity to fund the creation of business and production methods involving new technology.

BENEFICIARIES

Companies of all sizes with headquarters in Reunion that have been in business more than 3 years.

INDUSTRY:

Companies in the production sector of an industrial nature, business services, regularly listed on legal registers.

TRADE:

- Trade businesses involved in production or service provision
- Businesses with no micro-business tax status

CRITERIA FOR BONUSES

- Priority sectors
- Innovation: notion expanded throughout Reunion territory
- The search for new markets, so the ability of a business to acquire some of its turnover internationally
- Exposure to outside competition: as opposed to sheltered sectors involving, for example, the service provision sector for the public and businesses, the construction industry, aggregate industries...
- Significant contribution to employment
- Gradual implementation of environmental protection measures (management and control of energy, production of renewable energy, water management and waste management)
- Sustainable development

Plus, the installation within the Business Zone is also a vantage point and will result in boost to aid*

ELIGIBLE EXPENDITURE

- Production equipment
- Means of implementing the products with the customer
- Shipping costs
- External marketing or design costs
- Development of e-commerce solutions
- Communications related to involvement from the POE FEDER
- Non-tangible expenditure (research, consultations, fees...)**

*Increase of 10 points for businesses in the 'aided' Business Zone Does not occur below 40%

** If directly involved with the investment programme

RATE
OF AID

50%

eligible amount
capped at €1.5M

RATE

20%

with increase of
20 or 30 points
per additional
criterion

Use of Soft Skills Product competitiveness

This device is intended to strengthen internal expertise through non-tangible investment via:

Use of outside council
Services provided by laboratories
Inclusion of the cost of expertise

BENEFICIARIES

Business in the EU sense, regularly listed with the RCS (Registre du Commerce et des Services [Registry of Commerce and Services]) or RM (Répertoire des Métiers [Trades Directory]) of Reunion.

ELIGIBLE EXPENDITURE

All external services necessary for success (research and diagnostics, translation, communication and multilingual website costs)

Grant rates:
From 50% to 65%. Bonus of 15% of the assistance rate for projects involving shares listed in an internationalisation process.

CAPS

€30,000 per operation



Strengthening of Management within the Company

This device is intended to strengthen internal expertise through the recruitment of management personnel/management to structure the organisation of the company

BENEFICIARIES

Business in the EU sense, regularly listed with the RCS or RM of Reunion.

ELIGIBLE EXPENDITURE

Gross salary and employer taxes for the manager recruited under a 1-year period.



Creating real estate for businesses and business parks (excluding ITIs)

Business parks will take into account environmental and architectural aspects and will be connected to TIC (technologies de l'information et de la communication [information and communication technologies]) network. This will help improve competition among lease-holding companies that may direct most of their resources to their operation cycle or their product investments.

Set in an environment specifically dedicated to financial activity, lease-holding companies will benefit from better visibility and the synergies created among them. These factors will help increase their competitiveness and their market share.

BENEFICIARIES - DEVELOPERS

Private businesses and their associations, local authorities and their public or private associations.

ELIGIBLE EXPENDITURE

- Previous research phases (research, assistance with project ownership, mandate fees, operation management...)
- Work phases (assistance with project ownership, mandate fees, operation management, project ownership research for the VISA/EXE phase during the assistance phase for reception operations...)

GRANT RATES

Previous research and works:

45% of eligible expenditure for large business

55% for medium-sized businesses

65% for small businesses

CAPS

Feasibility study: €40,000

Operational research and building and house hunting: up to €140.49 per m² (according to research and location)

Work: 100% of the net deficit of the operation (eligible expenditure - estimated rental income) with the limit of the cap determined by the nature of the operation

GRANT RATES

up to

65 %

according to
companies sizes

CAPS

up to

€40,000

according to research

Supporting strategic sectors

Sectors identified by the Regional Council of Reunion as priority sectors benefit from further aid measures specific to each of them.

Tourism



Digital



Cinema and audiovisual



Agri-food



Renewable Energy



Environment



p67



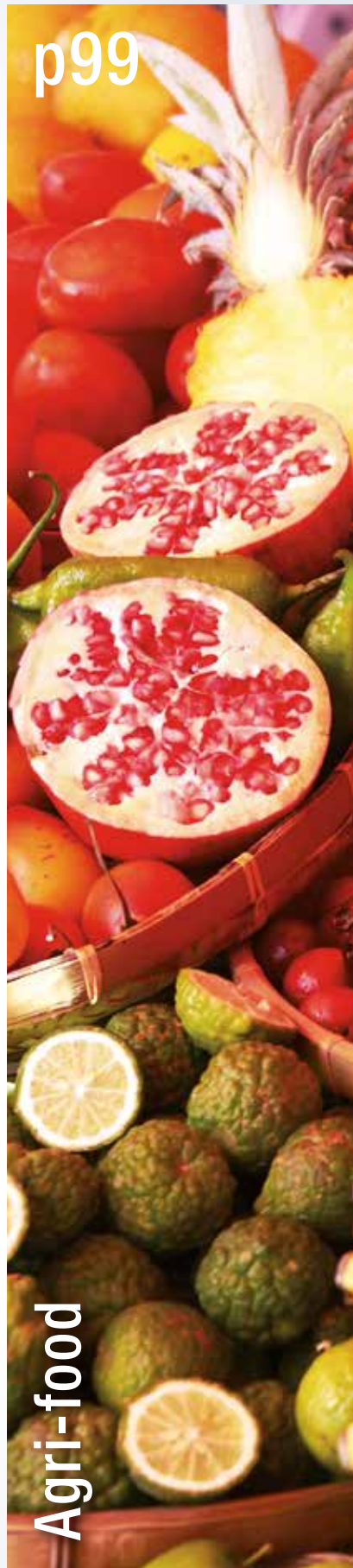
Tourism

p83



Digital

p99



Agri-food

p115

Renewable Energy & Environment

SUPPORTING
STRATEGIC
SECTORS,
in Reunion Island

2



TOURISM

A key player in the Indian Ocean, for both economy and job creation

The multifaceted island of Reunion offers an idyllic setting to delight every visitor, whether they have come for the mountain scenery of the cirques (natural amphitheatres) or for the beaches along the coast.

For thrill-seekers, sporting enthusiasts, nature lovers, keen divers, culinary amateurs on the lookout for exotic tropical fruit, vegetables, spices and herbs, and admirers of unique and refined culture and architecture, Reunion Island can offer you the very best.



Reunion, The island with a thousand faces, and a thousand landscapes

In terms of tourism, Reunion is one of the world's hotspots for biodiversity, boasting a unique natural environment:

- # The « Pitons, Cirques and Ramparts »
- # A national park (105,400 hectares), a natural marine reserve (35 km²)
- # An active and accessible volcano, Piton de La Fournaise,
- # More than 1,000 km of clearly-indicated footpaths
- # 40 km of beaches, lagoons and coral reefs



A geological treasure trove

It was thanks to the island's unique 'Pitons, Cirques and Ramparts' that Reunion was granted the status of world heritage site by UNESCO in August 2010, thus becoming France's 35th site to obtain this classification.

One of the world's unique tourist destinations, Reunion is ideal for the development of an attractive, diverse, authentic and sustainable tourism industry. Today, this sector continues to consolidate its strong impact in the creation of wealth and jobs, confirming its position as an emerging activity and source of diversification for the island's economy.

In fact, tourism represents nearly 10,000 jobs, either employees or independent workers, (4% of all jobs on the island) and a turnover estimated at €900m.

In addition, in terms of hospitality, more than 400 hotel rooms have been either created or renovated, representing more than €50m in investment and the creation of more than a hundred new jobs.

Key figures
for **2014**

→ **405,700**
tourists

→ **€292M**
of spending

→ **17 days**
on average spent on
the island

Sources : IRT / Insee

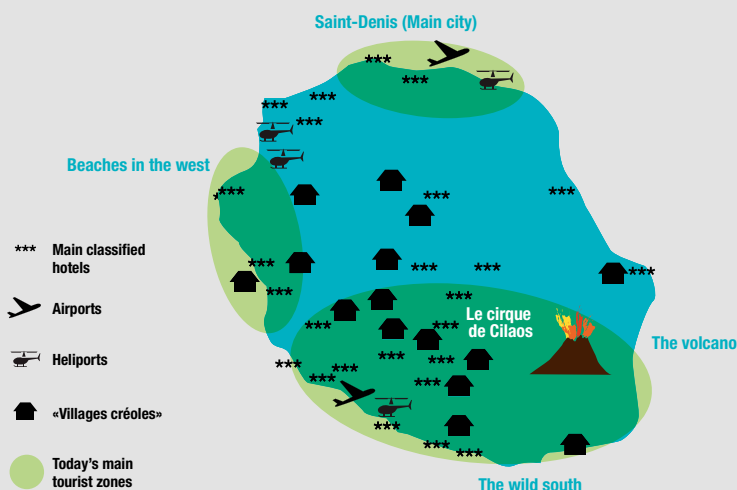


→ A diverse choice of leisure activities

Reunion Island offers an extensive array of leisure activities, in terms of sports, visits and opportunities to relax. The island's natural heritage, cultural diversity and rich cultural appeal make it a sensational destination to experience all kinds of emotions:

- # **Water sports:** surfing, windsurfing, jet skiing, diving, big-game fishing...
- # **Mountain sports:** hiking, canyoning, climbing, mountain-biking, bungee jumping, paragliding, hang-gliding...
- # **More classic activities:** golf, tennis, squash, swimming...
- # **Museums, theatres, cinemas, nightclubs and casinos**
- # **International events:** the Sakifo Musik Festival, La Diagonale des Fous (Grand Raid – Extreme Mountain Trail), the Manapany Surf Festival...

→ A variety of accommodation on offer



Hotel accommodation in Reunion includes 54 classified hotel establishments including:

- # 2 five star hotels
- # 30 hotels of either three or four stars

It also has 332 rural bed and breakfasts, mountain lodges, guest houses, furnished accommodation, all located primarily up in the hills and in the south.

→ Skills & expertise

Reunion benefits from qualified human resources trained by high-performance establishments in the sector of tourism:

- # Professional Hotel and Catering High School (La Renaissance)
- # Reunion Island technical training centre for tourism, hospitality and catering (Centhor)
- # University Business School (IAE)

These establishments award diplomas in the following areas:

- # Catering, wine-tasting, hospitality, accommodation, languages, I.T., health and safety, knowledge of Reunion, management...

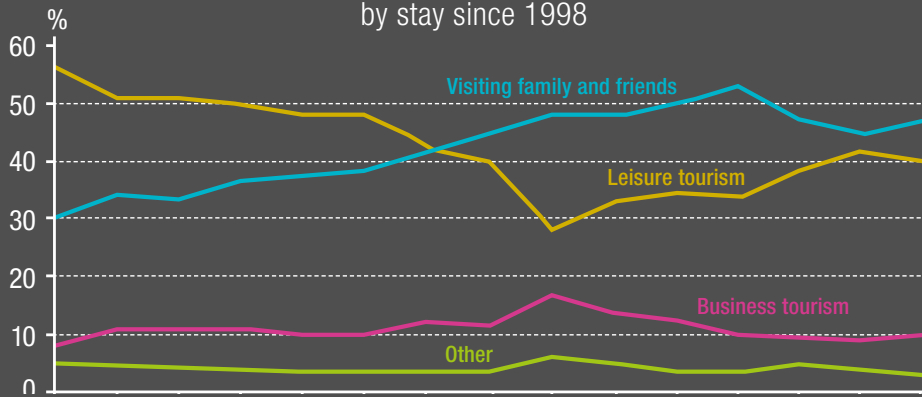
Some figures...



TOURIST TRAFFIC

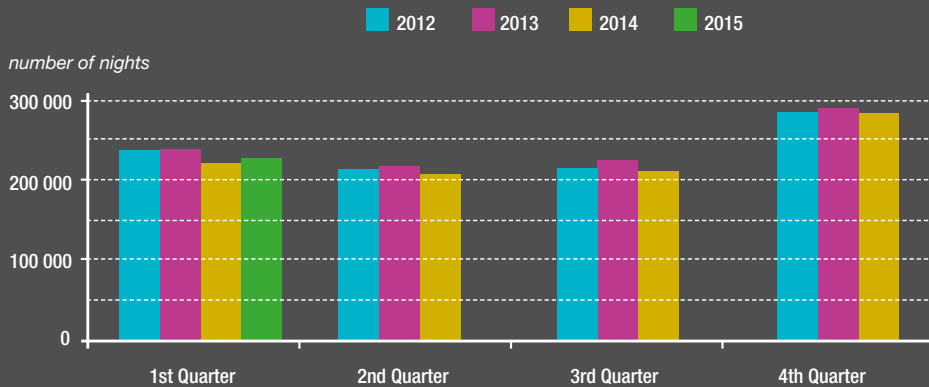
Reunion welcomed over 405,700 tourists in 2014.

DISTRIBUTION OF TOURISTS
by stay since 1998



Insee-IRT and tourist numbers survey

OCCUPATION OF CLASSIFIED HOTELS
overnight stays from 2012 to 2015

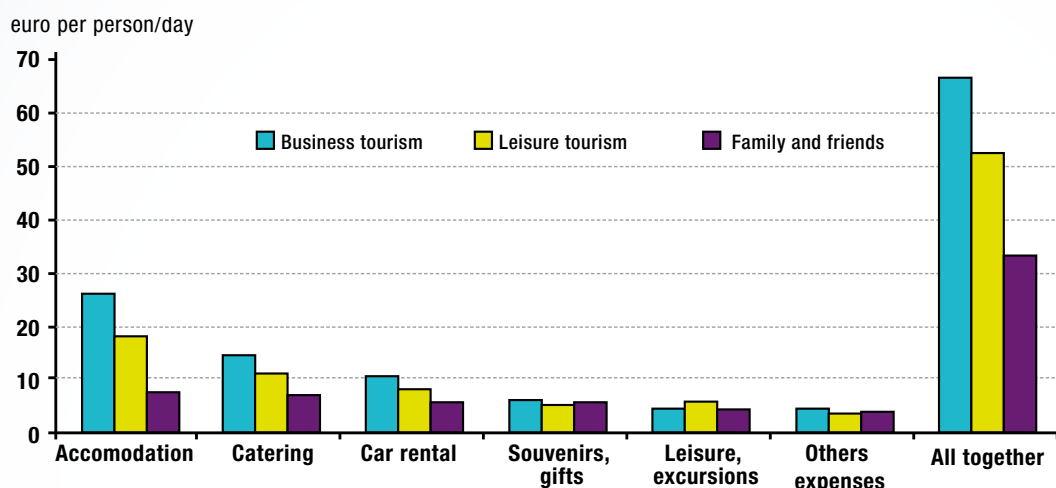


INSEE and DGCI

SPENDING

Non-resident tourists spent €292m in 2012 and stayed for an average of 17 days.

Their spending concerned accommodation and restaurants, but also leisure (excursions, sporting activities, museums...). The average budget for spending after arrival is €719 per person.



Source : Insee/IRT - April 2013

REGIONAL POLICY FOR EXPLOITING THE ISLAND'S POTENTIAL

As tourism represents one of the essential factors for the economic development of Reunion, it was given regional priority status for 2010-2014.

In August 2010, the Regional Council of Reunion put in place a new policy for tourism aiming to reform funding measures to support the sector.

This reform aims to make better use of Reunion's assets, and is characterized by an enhanced governmental support for tourism professionals, public initiatives (particularly in terms of development), innovation and accompanying institutes of quality. It also includes a:

- # Repositioning of the «Reunion Island Brand» following the Unesco world heritage classification for the «Pitons, Cirques and Ramparts»
- # Reinforcing aid for tourist activities
- # Strengthening cooperation with certain countries in the region under the "Vanilla Islands" label.

Projects for high quality tourist accommodation and services that integrate specific environmental and cultural dimensions of the territory therefore receive assistance from local authorities, specifically in the following sectors:

- # Adventure tourism
- # Outdoor leisure sports
- # Volunteer tourism
- # Resort tourism
- # Business tourism



TOURISM LABELS

The « Villages Créoles[®] » label

This network represents more than 100 service providers for accommodation, catering and leisure activities across 16 villages, all following an eco-tourism concept.

The tourism professionals concerned all commit to the following :

- # Sharing the Creole spirit,
- # Sustainable development,
- # Quality,
- # A locally constructed development project.



Vanilla Islands Organization



Tourism, one of the Indian Ocean's key vectors for the economy and for job creation, is now faced with competition from new tourist destinations.

In order to better cater for the patterns of tourist consumerism in the future, and to exploit tourism activities following these patterns, Mauritius, Reunion, Seychelles, Madagascar, Mayotte and the Comoros collaborated in 2010 to create a label called 'Vanilla Islands'. Then, in 2012, the top management of these member islands came together to create the Vanilla Islands Organization (VIO), whose headquarters are based in Reunion.

@ For further information: www.ilesvanille.com

The label 'Vanilla Islands' is first and foremost a brand for the islands of the Indian Ocean, aiming to improve their visibility and appeal across the world. It is based on reciprocity, shared values and complementary assets. There is an insistence on building links and exploiting the synergy between the islands of the Indian Ocean by the creation of combined tourism products in order to encourage exchanges between the different islands.

OBJECTIVE OF THE « VANILLA ISLANDS » LABEL

- To promote the development of tourism in the Indian Ocean area
- To optimize communication
- To create a common advertising strategy in order to win over new customers and benefit from existing customers, while still respecting the authenticity of each island
- To promote authentic products of the Indian Ocean islands.

WHO TAKES PART?

The Vanilla Islands concept is supported and developed in partnership with 6 offices and tourist boards of islands of the Indian Ocean area, namely:

Reunion Island Tourism Board

@ For further information: www.reunion.fr

Seychelles Tourism

@ For further information: www.seychelles.travel/en/home/index.php

National Tourism Office of Madagascar

@ For further information: www.madagascar-tourisme.com

Mauritius Tourism Promotion Authority

@ For further information: www.tourism-mauritius.mu

Departmental Tourism Committee for Mayotte

@ For further information: www.mayotte-tourisme.com

Tourism Association of Comoros



AID SPECIFIC

to the TOURISM Industry*

Investment aid for setting up businesses

OBJECTIVES

- # Promoting the creation of new, diversified and high-quality businesses and activity, significantly supporting productive investment
- # Developing an attractive range of services, reflecting in particular the identity of the island and responding to the needs of the clientele in terms of authenticity, expatriation and the desire to enjoy experiences that are off the beaten track.

BENEFICIARIES

- # Businesses regularly listed with the RCS or RM of Reunion that have been in business less than 3 years.

AID AMOUNT

The programme of investment must be at least €10,000 (eligible expenditure excl. tax)

Classified accommodation:

Expenditure cap per room: up to €40K (€60K for the Les Hauts area)
Cap: €3.5M

Approved restaurants:

Grant rate: up to 60%
Cap: €100K

Tourist activities:

Grant rate: up to 60%
Cap: €1M

Business development aid

OBJECTIVES

To develop:

- # Maintain and focus effort to significantly develop, harmonise and improve the range of tourist products.
- # Facilitate business development and sustain existing facilities by offering significant support to their productive investments, enabling them to create and maintain jobs.

The sectors affected: accommodation, catering, entertainment.

BENEFICIARIES

Business in the EU sense, regularly listed with the RCS or RM of the Reunion that have been in business more than 3 years.

AID AMOUNT

The programme of investment must be at least €10,000 (eligible expenditure excl. tax)

Classified accommodation:

Renovation, diversification, bringing up to standard, hotelier investments

Grant rates: from 30% to 60%
Cap: €1.5M

Extension:

Expenditure cap per room: up to €20K (€30K for the Les Hauts area)
Cap: €1.5M

Approved restaurants:

Grant rates: from 30% to 60%
Cap: €100K

Tourist activities:

Grant rates: from 30% to 60%
Cap: €1M

* All applications must be submitted to the FEDER reception of the Reunion Region

Tourist accommodation and private catering in Les Hauts*

OBJECTIVES

- # to assist with the creation, renovation, modernisation and upgrading of accommodation complexes in rural areas in order to benefit from a high-quality network that is essential for meeting the demand of local, national and international clients
- # to create new products in the areas of accommodation, catering and leisure activities in order to be able to offer a wider range of products in general
- # to enable the creation and development of educational products/service or new products/services for tourists under existing labels and/or brands

These measures are taken to help ensure integration between structures (construction, development, renovation) and the landscape and are in line with sustainable development values (energy conservation, waste management, renewable energy production...).

BENEFICIARIES

- # Companies and traders located in an urban environment (defined as the rural area under section 8.1) and listed on legal registers: micro-enterprises as defined by Commission Recommendation 2003/361/EC with a workforce of 10 or less and a turnover or total annual figures of no more than 2 million Euro.
 - # Farmers registered under AMEXA (Assurance Maladie des Exploitants Agricoles [Farmers' Health Insurance]) who have an operating licence issued by the competent authorities and who are wishing to diversify their business into accommodation and catering services for tourists.
- Project selection procedures

ELIGIBLE EXPENDITURE

- # New and depreciable tangible investments in the construction and renovation of tourist accommodation and catering structures including general costs (expenditure noted by previous research, and design and implementation) and costs related to the delivery of materials.

AID AMOUNT**

- General costs (expenditure noted by previous research, and design and implementation): 60%
- Investment expenditure (tangible and depreciable costs related to construction/renovation project):
- Base rate: 30%
- Bonus rate:
- +10% for use of renewable energy and/or energy management control measures (water, electricity, waste...)
 - +10% for use of bioclimatic and/or traditional local architecture and environmentally friendly landscape developers
 - +10% for projects using an approval process or national/international brands with a strong environmental presence

Up to 60% maximum



* Projects will be selected by the Programming Committee following recommendation from the committee service once the project has been assessed (see «eligible expenditure»).

**For projects that do not fall under article 42 of the TFUE for which funding is subject to rules of statutory aid, the following will be used: an aid scheme exempted by notification under Commission Regulation (EU) no. 651/2014 of 17 June 2014, or under Commission Regulation (EU) no. 702/2014 of 25 June 2014; or a notified scheme pursuant to article 108, paragraph 3 of the Treaty on the Functioning of the European Union for de minimis aid.

Funding measures for collective projects and professional associations

OBJECTIVES

Accompany survey operations and specific advertising, common to several different tourism companies, with an aim to:

- # Organize various tourism sectors
- # Develop cooperation between businesses
- # Study new products...

BENEFICIARIES

Organizations located in Reunion

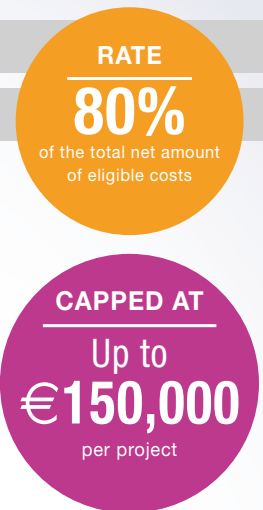
For projects of general interest:

Consular bodies, local authorities, EPCI, public institutions and more generally any entity (public institution, association, company) engaged in a public service capacity*

For collective projects:

Organizations and professional associations, irrespective of their legal status, in order to structure and promote one or several priority tourism sectors • Associations bringing together various institutional partners and stakeholders in tourism • Organizations representing a group of companies (associations, consular chamber,...) • Businesses mandated by peers

**EPCI: Public Institution of Inter-communal Cooperation*



Awareness, upkeep and preservation of natural, cultural and landscape heritage *

OBJECTIVES

to promote the inclusion of the landscape and the environment into public policy, into business and development projects and with the local population (social acceptance).

to support the implementation of preventive and corrective measures to protect natural areas.

ELIGIBLE ACTIONS

Research and action linked to the awareness of natural, cultural and landscape heritage and spreading that awareness, mainly so that it can be included in public policy

Research enabling a better understanding of the impact of businesses and various installations and developments on the environment and the landscape (landscape and environmental integration studies)

Investments aimed towards integration between the landscape and the environment and any work being carried out.

Additional qualitative costs linked to any materials or techniques used in order to enable wider social acceptance and integration between the landscape and the environment and a given project

Experimental projects (including the promotion of native species as part of development projects and with the population in general)

To work to identify the impact or dangers posed by humans e.g. landscape issues, disused facilities, etc.)

Measures to eliminate or reduce this impact.

To produce and share a best practice guide or technical and regulatory recommendations for the optimal integration between the landscape and the environment and infrastructure, facilities and construction (especially Coeur Habité National Park), as well as improving general practice and use thereof.

BENEFICIARIES

For those involved publicly in research, technical guides, restoration operations, awareness raising and training:

. public establishments (national park, ONF, joint ventures...)

. Communities (municipalities, EPCI (établissement public de coopération intercommunale [public inter-municipal cooperation establishment])

- . public operators and developers
- . Law 1901 associations working in environment
- # Those involved privately in efforts towards integration between the landscape and the environment and any work being carried out
- # Law 1901 associations working in environment
- Project selection procedures

ELIGIBLE EXPENDITURE

- # Research and actions linked to the awareness and management of natural cultural and landscape heritage and sharing that awareness
- # Research and actions linked to the awareness and the impact of business and development on this heritage
- # Research and investment linked to promoting indigenous species
- # Design, production and dissemination of a best practice guide or technical and regulatory recommendations
- # Engineering costs related to project management
- # Cost of materials, logistics and communication related to actions undertaken
- # Research and investment linked to integration between the landscape and the environment and any work being carried out.
- # Actions regarding the protection and restoration of heritage assets and the reduction of human impact

AID AMOUNT**

- # 100% for research, technical guides, restoration operations, awareness raising and training.
- # 80% for investments in landscape integration, impact reduction and improved practice.

Support and structuring of economic development of Les Hauts - OPARCAS *

OBJECTIVES

- # This measure aims at funding tangible and non-tangible investment of companies in the midst of creating or developing non-agricultural business in specific sectors (commercial production, local commerce, the services) and in Les Hauts.
- # It is aimed at supporting individual or collective businesses.
- # It is also aimed at increasing the appeal of local commerce in rural areas in order to respond to a growing population and to incoming tourists but also to take part in the economic 'opening up' of the 'gap' areas, focusing on the idea of shops in Les Hauts as stated in the charter.

BENEFICIARIES

- # Small businesses in the EU sense (workforce of 10 and producing no more than 2 million Euro in annual turnover) producing, selling, trading and providing services and present in a rural area (as per the Programme de Développement Rural de La Réunion [the Reunion Rural Development Programme]).

ELIGIBLE EXPENDITURE

- # Tangible and non-tangible investments for tools for production (non-farming), processing or for marketing the company, including general associated costs (research costs, architect fees);
- # Collective development and equipment brought by many businesses in order to share production, processing and marketing costs

AID AMOUNT**

- # Unique rate: 55%



*Projects will be selected by the Programming Committee following recommendation from the committee service once the project has been assessed (see «eligible expenditure»).

**For projects that do not fall under article 42 of the TFUE for which funding is subject to rules of statutory aid, the following will be used: an aid scheme exempted by notification under Commission Regulation (EU) no. 651/2014 of 17 June 2014, or under Commission Regulation (EU) no. 702/2014 of 25 June 2014; or a notified scheme pursuant to article 108, paragraph 3 of the Treaty; or Commission Regulation (EU) no. 1407/2013 of 18 December 2013 relating to the application of articles 107 and 108 of the Treaty on the Functioning of the European Union for de minimis aid. This measure can be combined with additional national tax exemption funding and VAT NPR within the public aid limit cited in Regulation (EU) no. 1305/2013. If there is a difference between the aid rate stipulated by Regulation 1305/2013 and that stipulated by statutory aid rules, the lowest rate is applicable.

ACTORS AND PARTNERS



THE REGIONAL COUNCIL OF REUNION

The Regional Council of Reunion offers added support to the tourism sector, identified as a priority sector in August 2010:

- # Direct and local promotion projects
- # Investment support for tourism businesses
- # Strategy for regional cooperation with the 'Vanilla Islands' concept (Reunion, Mauritius, Madagascar, Seychelles)

@ For further information: www.regionreunion.com



IRT, THE REUNION ISLAND TOURISM BOARD

A non-profit-making charity (Law 1901), the Reunion Island Tourism Board actively participates in:

- # The promotion of Reunion Island locally, nationally and internationally
- # The showcasing of the entire network of tourism professionals

It also manages the Regional Observatory for Tourism (ORT).

@ For further information: www.reunion.fr



THE REUNIONESE TOURISM FEDERATION (FRT)

As a non-profit-making charity (Law 1901), the FRT coordinates and facilitates the network of Reunion Island's tourist offices. Its main objectives are:

- # To accompany structures during territorial reorganization towards a network of inter-municipal tourism offices
- # To bring the local network towards the creation of 'tourist offices of the future' by engaging staff and service providers in improving hospitality and posting information online
- # To improve the quality of tourism offices through the new national ranking system effective as of 1st January 2014
- # To act as an interface between tourist offices and stakeholders in tourism

@ For further information: www.reunion.fr



THE GENERAL COUNCIL OF REUNION

The General Council is the owner of a departmental forestry area (92,000 hectares, or about 40% of the surface of the island). It also owns 80% of the area classified as a world heritage site. In partnership with the National Forestry Commission, and under its remit as far as the environment is concerned, it aims on a daily basis to upkeep, develop and equip the network of woodland areas and tracks.

Through its Departmental Hiking and Trekking Program, the General Council has several hundreds of kilometres of woodland tracks and footpaths on offer, a wonderful way to discover nature and raise environmental awareness.

@ For further information: www.cg974.fr



THE CHAMBER OF COMMERCE AND INDUSTRY OF REUNION (CCIR)

In the sector of education, the CCIR operates through the technical training centre for tourism, hospitality and catering (Centhor) and the Reunion School of Management and Commerce (EGC).

@ For further information: www.reunion.cci.fr



THE REUNION ISLAND CHAMBER OF TRADES

The Chamber of Trades and Crafts plays an important role in tourism, as the handicraft sector has great potential in this domain.

@ For further information: www.artisanat974.re



THE REUNION ISLAND CHAMBER OF AGRICULTURE

With the 'Welcome to the Farm' network, the Chamber of Agriculture participates in the economic development of tourism.

In fact, some farmers have chosen to develop tourist activities on their farms to promote their produce, to introduce visitors to their profession and share their lifestyle via services related to gastronomy, accommodation, visits and leisure activities.

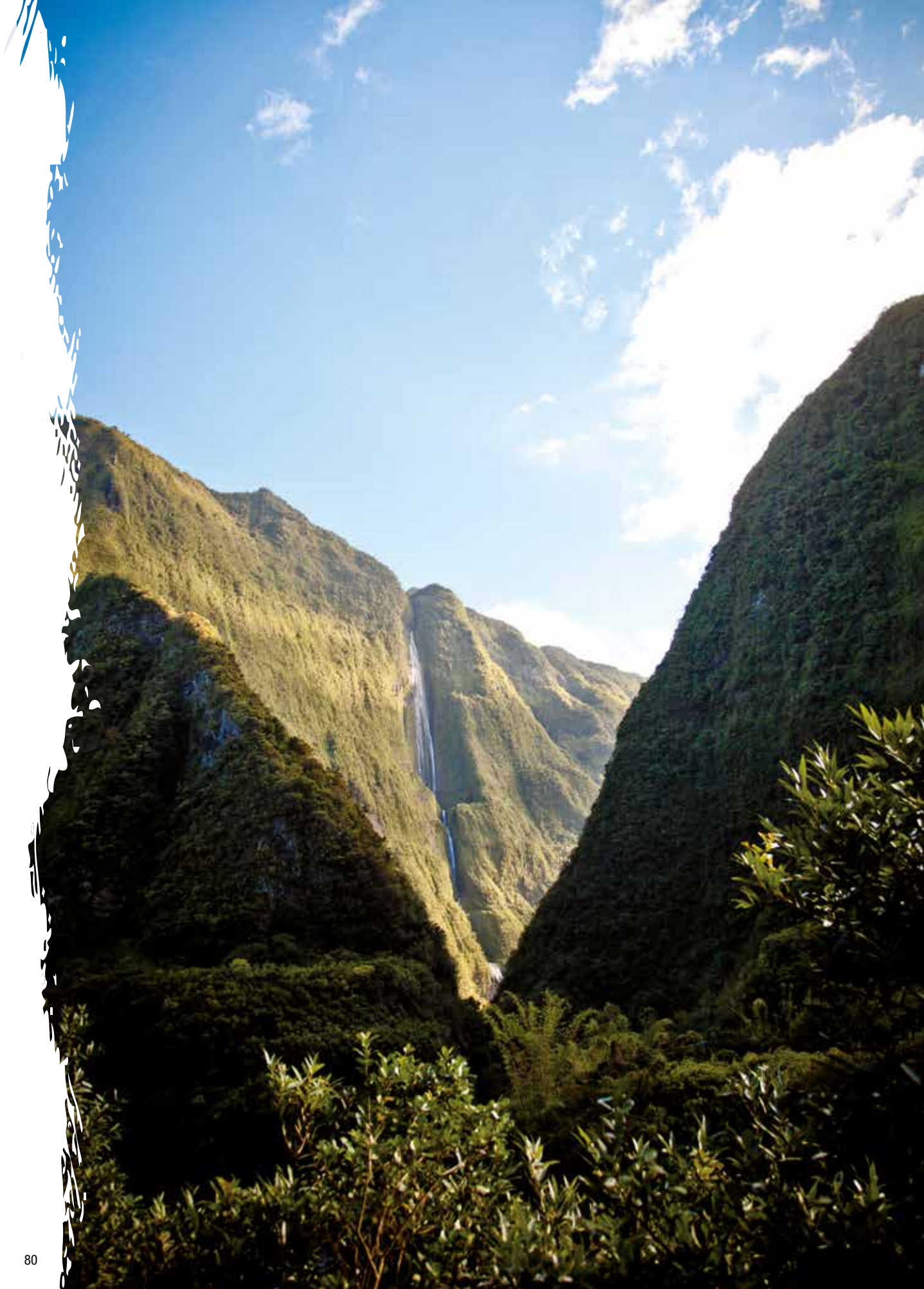
@ For further information: www.reunion.chambagri.fr



TOURISM CLUB

The Tourism Club of Reunion Island is a non-profit-making charity (Law 1901). Founded in 2010, it aims to promote the development of the tourism industry, bringing together professionals from all sectors of the industry (hospitality, restaurants, leisure activities, air and road transport, travel agencies, etc).

@ For further information: www.clubtourisme.re





Local authorities, institutional organizations, associations... all these representatives are highly involved, working hard to stimulate real economic growth in the tourism sector and to create coherent initiatives in favour of tourism development.



DIGITAL

A major sector in full expansion

Digital represents one of Reunion's most dynamic industries. Identified as a priority sector, it boasts a high quality technological environment and a huge potential both for the local market and for neighbouring markets.

One of the most dynamic sectors in Reunion

- # An island connected to the rest of the world thanks to a high-quality network
- # One of the three largest cyber-domes in the world
- # Digital skills recognized overseas
- # A young, well-trained and tech-savvy population

An Island integrally connected and linked to the rest of the world

Reunion has broadband connections to the worldwide digital network*, allowing local companies to offer their services to the world with a minimum of stress.

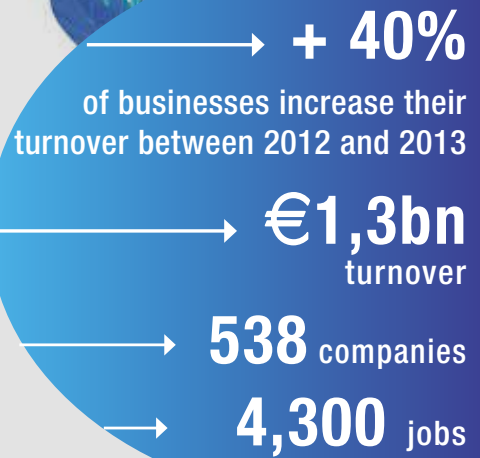
- # There are 8 internet service providers present on the island
- # Quality network combining several technologies (fibre optic, wireless broadband coverage...)
- # The rate of mobile phone coverage on the island is over 95%, with connections to Europe and the Indian Ocean

*see "Digital infrastructures" on p.18

A local market with considerable demand

Digital companies located in Reunion benefit from a dynamic internal market which is constantly on the look-out for new technologies.

- # One of the most tech-savvy populations in the region
- # Connected companies



Source : Région Réunion - Etude Synthèses sur la filière (Industry Study)

Source: Survey ARCEP July 2013

RATE
with BROADBAND
CONNECTIONS

50%

RATE
with HOME
COMPUTERS

68%

RATE
with MOBILE
TELEPHONES

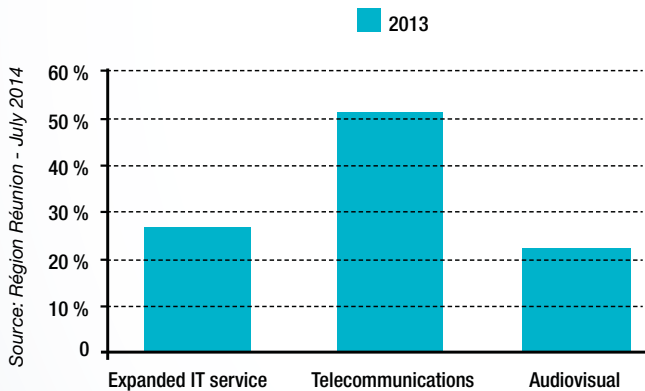
84%

Survey ARCEP July 2013



➔ Several areas of expertise

DISTRIBUTION OF PRODUCT TURNOVER BY DIFFERENT DIGITAL ACTIVITIES



As a modern and open territory, Reunion has undertaken to explore all the possibilities offered by Information and Communication Technology. In different areas, progress in this domain represents an excellent vector for efficiency and creativity.

Reunion therefore boasts a fine array of Digital expertise:

- # Design of CD-ROMs, servers and websites, networks, interactive terminals: activities that are being exported to mainland France, Canada, Mauritius, Madagascar and South Africa
- # Digital consultants: experts in auditing and improving quality processes
- # Communication companies: creation and production of graphics and multimedia
- # Animation and graphic design: with Pipangaï, Europe's second largest studio for colouring and compositing, Reunion plays a major role in cartoon creation in Europe. The sector has opened up further to new companies working in pre-and post-production, 3D animation and internet and cross-media techniques
- # Development of specific tools: energy efficiency, WEB security, Geographic Information System, RFID (Radio Frequency Identification), etc...

REUNION

An island of opportunities and skills

REUNION, REGIONAL LEADERSHIP POSITION

Reunion occupies the leading position in the field of digital within the region, notably thanks to:

- # A significant presence of international companies who recognize the island's potential
- # Solid partnerships between companies in Silicon Valley and in Reunion
- # A strong desire of many digital professionals in Reunion to establish partnerships all over the world

MULTIPLE AXES OF DEVELOPMENT

Reunion has a strong potential for growth in many areas, including:

- # Green digital aiming to produce more economically and environmentally-friendly
- # E-government
- # Data centres and the provision of related exportable services across the zone
- # Digital solutions to facilitate business development (techno-centres with digital solutions made available to businesses ...)
- # Anti-spam solutions in order to stamp out the phenomenon in a given territory
- # E-health and exportable services all over the world
- # Services related to 3D modeling (virtual reality, augmented reality ...)
- # Embedded systems
- # Acquisition and data processing systems

In addition, in a small island such as Reunion, digital really becomes a sector whose activity crosses over into other branches. Its development represents a vector serving to open horizons and foster competitiveness for sectors with high added value and high technology needs: Green I.T., home automation, e-learning, specific monitoring software, e-health, biotechnology, energy, environment, tourism, agri-food.

A HIGH LEVEL OF TRAINING AND RESEARCH

Digital companies will find that Reunion boasts top quality European training and research facilities offering specialized training in digital:

The Institute of image of Indian Ocean - ILOI

ILOI provides courses in the field of image and new media: computer graphics, 2D/3D animation, post-production, web design and multimedia, audiovisual and cinema. With exceptional facilities, one of the largest cyber-domes in the world and more than 300 graphic design workstations, it benefits from international partnerships and awards diplomas up to Master's level.

@ For further information: www.iloι.fr

The University of La Reunion

The university has an Information & Communications department providing specialized digital training:

- # An Info-Com degree specialized in «Information and Communication»
- # A professional degree in communication specialized in «Technology and Communication Activities» (ATC)
- # A Master's degree specialized in «Information and Communication Sciences»

@ For further information: www.infocom-reunion.fr

The Indian Ocean Higher Education Engineering School of Reunion - the ESIROI

The ESIROI trains engineers, including the specialty «Telecommunications, I.T. and Multimedia services»

@ For further information: www.esiroi.univ-reunion.fr

The National Conservatory of Arts and Crafts

It offers many courses in Information Technology and Communication.

@ For further information: www.cnam.re

The International School of Computer Engineering - SUPINFO

SUPINFO is a private engineering school, recognized by the French State, specialized in further education courses in Information and Communication Technology. It offers courses up to Master's level.

@ For further information: www.supinfo.com

Research laboratories related to digital

In areas related to energy systems, Reunion has three university laboratories working on digital solutions:

- # PIMENT: Department of Physics and Mathematical Engineering for Energy and the Environment
- # LIM: Laboratory of Computer Science and Mathematics
- # LE²P: Laboratory of Energy, Electronics and Processes

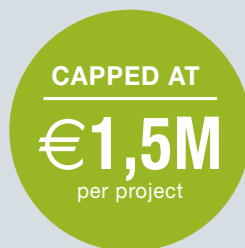
@ For further information: www.univ-reunion.fr/recherche/laboratoires/

SPECIFIC FUNDING MEASURES for the digital sector

The Regional Council of Reunion provides this sector with financial aid, not only within the POE ERDF 2014-2020 framework, but also with various measures aiming to develop the industry: support for vocational training, infrastructure development and notably broadband connections...



@ For further information: www.regionreunion.com



Digital company investment

OBJECTIVES

Supporting the development of the digital sector • Promoting the development of new products and services by lowering the cost of investment • Encouraging ICT companies to take into account the Regional Council's strategic priorities: employment, innovation, research into new opportunities, sustainable development

BENEFICIARIES

SMEs as defined by EU terms (for the precise definition, consult annex I of EU Commission regulation 800/2008) active in the field of digital (including audiovisual) consistently listed in the legal registers, and whose establishment is or will be located in Reunion and in business for less than 3 years.

ELIGIBLE SPENDING

Hardware and software • Intellectual services (surveys, consulting, fees,...)
• Shipping costs • Installation of hardware and software.

Approved ancillary spending (limited to 50% of eligible spending):

Development of technical premises, related to the primary investment • Specific furniture for digital • Communication, advertising and travel fees • Training costs when exploiting new investment

AMOUNT OF AID

- Between 20% and 50% of the total net amount of the eligible costs
- Capped at €1,5M per project

CONDITIONS

Contribution from the beneficiary (exempt from any public assistance) represents 25% of the investment program needs • Investment must be maintained over a minimum period of 3 years





Business development aid Businesses

OBJECTIVES

Supporting investment allows businesses to adapt their production facilities to the changing local, national and international technological and economical landscape (job creation, innovation, export, protection of the environment, locating to business zones)

BENEFICIARIES

SMEs (private companies with a EURL, SAS, SARL or SA status or SARL or SA, EI, cooperative companies or sole trader or microenterprise establishments) in the EU sense, regularly listed with the RCS or RM of the Reunion, operating in the digital (and audiovisual) sector and having been in business more than 3 years.

AID AMOUNT

The programme of investment must be at least €10,000 (eligible expenditure excl. tax)

**All applications must be submitted to the FEDER reception of the Reunion Region*





Public or collective ICT measures in favour of the market economy

OBJECTIVES

Indirect support for companies working in priority sectors (industry, crafts, tourism, ICT, audiovisual / music,...).

BENEFICIARIES

Projects of general interest: local authorities, public institutions and consortia, and more generally any entity (public institutions, associations, companies) performing a public service.

Collective projects : organization representing a group of companies (association, consular chamber...)

ELIGIBLE EXPENDITURE:

- Direct internal expenditure: provided this is not financed elsewhere and that the cost elements are clearly presented
- Travel, accommodation and catering expenses related to activity
- Stall, room rental fees
- Literature costs (brochures, materials...)
- All external services necessary for success
- Purchase of equipment pro-rated for its usage during the project

AID AMOUNT

- # Businesses or organisations leading actions in the public interest: up to 100% of eligible amount
- # Organisations leading collective actions: up to 50% of the eligible amount (aid may be cumulative with other public funding)
- # Public grant cap: €100,000 per project

CONDITIONS

For collective projects, the project leader will bear a minimum of 25%



REUNION, Land of images and film set

REUNION, AN IDEAL SETTING FOR AUDIOVISUAL CREATION AND PRODUCTION

Reunion Island, with its thousand faces and a thousand landscapes, offers an unparalleled choice of beauty and diversity across 2,500 km²: a huge variety of landscapes, from savannah to rainforests, from the charred terrain around the volcano to sunny beaches and highland pastures, the opportunities for scriptwriting really are both rich and exotic !

Reunion has a unique history and cultural wealth which complements this natural decor with architecture and authentic religious and cultural events.



A DYNAMIC SECTOR

There are numerous industry professionals to be found in Reunion: technicians, directors, executive producers, stage managers and sound engineers, guaranteeing real audiovisual expertise.

Around one hundred technicians representing virtually all areas of the audiovisual industry.

Around forty audiovisual production companies are based in Reunion, covering all sectors of the industry : shorts and feature films, documentaries, television series, cartoons and animation, video games, advertising, corporate videos or event management.

Numerous artists : actors, musicians, visual artists, photographers, designers, etc.

In addition to having produced locally, companies and technicians have experience working with France's largest production companies. Working on TV shows, magazines, commercials, and documentaries means that these professionals are more than capable of forming collaborative partnerships.





PROFESSIONAL AND TRADE UNION REPRESENTATION



AFR • REUNION FILM AGENCY

Established in December 2001 as part of the partnership between the Regional Council of Reunion and the Government (National Centre of Cinematography, Regional Committee of Cultural Affairs in Reunion), the Reunion Film Agency (AFR) has three main roles:

- # Hosting film shoots, providing an essential database of decors, technical equipment, artists, local businesses and actors.
- # Assistance in completing application forms for production funding requests and performing a secretarial role for the Specialized Technical Committee.
- # Accompaniment and supervision for writers, industry professionals and companies.

@ For further information: www.agencefilmreunion.com



URPAC • REUNIONESE UNION OF AUDIOVISUAL AND CINEMA PRODUCERS

Following requests from local producers, URPAC was set up in March 2008. The union now includes nearly thirty structures working along the following lines:

- # Supporting the development of members and defending their interests.
- # Creating a vocal platform for local audiovisual and cinema producers.
- # Relying on strong ties with national trade unions.
- # Creating a place for the exchange of key information (production management, taxation, rules, existing and future laws ...).

@ For further information: www.urpac.org

APAR • REUNION ISLAND ASSOCIATION OF PRODUCERS, WRITERS AND DIRECTORS

ADDITIONAL SUPPORT FOR THE INDUSTRY FROM THE REGIONAL COUNCIL OF REUNION ISLAND

The Regional Council of Reunion has developed an ambitious and dynamic support policy for the film-making, audiovisual and multimedia industry through:

- # The creation of a label called «Reunion, the perfect place for photography and film shoots» in order to raise awareness among media professionals about the potential of shooting on the island, promoting the beauty and diversity of scenery and landscapes on offer, as well as the know-how and skills which are locally available.

@ For further information: www.reunionterredimages.re

- # An array of specific financial measures for each of the various project phases: writing, development, pilot, artwork, short and feature film production, TV drama, animated series, transmedia, multimedia, video or motion capture.

- # The creation of a dedicated structure : The Reunion Film Agency

@ For further information: www.agencefilmreunion.com



REGIONAL FUNDING

for film and audiovisual production and creation*

Aid to encourage multimedia production

BENEFICIARIES

Multimedia production companies

ELIGIBLE SPENDING

CDs and DVD ROMs • Interactive DVDs • Information terminals • Web sites
• Interactive scenic displays

AMOUNT OF AID

- 25% share of the estimated local spending budget
- Capped at: €15,000

AMOUNT

25%

share of
the estimated local
spending budget

Aid to encourage the distribution of Reunionese music

BENEFICIARIES

Phonograph record producers or authorized multimedia production companies

ELIGIBLE SPENDING

CDs and DVD ROMs • Interactive DVDs • Information terminals • Web sites
• Interactive scenic displays

AMOUNT OF AID

- 25% share of the estimated local spending budget
- Capped at: €10,000 per music video

AMOUNT

25%

share of
the estimated local
spending budget

*Regional specific funding measures are extended until 30 June 2014. All applications must be submitted and incurred before 30 June 2014. Economic Affairs Department (D.A.E)

Aid for developing pilots and drafts

BENEFICIARIES

Production companies with previous experience in television or cinematographic production with one or more of their writers having emerged from Reunion or whose work will help showcase Reunion in the Indian Ocean.

ELIGIBLE EXPENDITURE

The following works of heritage value are eligible:

- series pilots (fiction, creative documentaries, animation)
- pilots for TV films, TV series, animated films

AID AMOUNT

- 35% of projected budget
- Cap: €3,000 per minute excluding credits



Aid for screenwriting and multimedia

BENEFICIARIES

Physical persons (writers, screenwriters) from Reunion whose work will help showcase Reunion in the Indian Ocean.

ELIGIBLE EXPENDITURE

Eligible are:

- Screenwriting projects of heritage value
- Fictional feature films
- Fictional short films
- TV films and series
- Animated films
- Creative documentaries

AID AMOUNT

- Assistance cap: €3,000
- Support for writers involves them receiving an annual fee of €3,000



Development aid

BENEFICIARIES

Production companies (SA, SAS, SARL, EURL) with previous experience in television or cinematographic production with one or more of their writers having emerged from Reunion or whose work will help showcase Reunion in the Indian Ocean.

ELIGIBLE EXPENDITURE

Eligible are:

- Works of heritage value, either one-off or a series for television, the cinema or new formats of digital distribution, falling into one of the following categories: long-term fictional works
- fictional series
- animated films
- creative documentaries

Projects receiving aid must be strictly designed or produced for the single Reunionese market and must be intended for worldwide distribution.

AID AMOUNT

- 50% of local expenditure.
- Assistance caps:
 - €15,000 for animated projects of a duration of 10 minutes or more, fictional feature-length films (90 minutes) and series of at least six 26-minute episodes
 - €8,000 for other genres.





Aid for production of short films

BENEFICIARIES

Production companies (SA, SAS, SARL, EURL) with previous experience in television or cinematographic production with one or more of their writers having emerged from Reunion or whose work or whose work will help showcase Reunion in the Indian Ocean.

ELIGIBLE EXPENDITURE

The following works of heritage value are eligible for cinema or television:

- fictional short films
- fictional short series

AID AMOUNT

- 50% of local expenditure.
- Assistance caps:
 - €30,000 for short films between 30 and 60 minutes



Aid for production of programmes

BENEFICIARIES

European production companies (SA, SAS, SARL, EURL)

ELIGIBLE SPENDING

Any except broadcast feeds (studio broadcasts, sports programmes or events) and commissioned films

The following works of heritage value are eligible:

Fictional feature-length films • TV films and series • Animated films • Creative documentaries • Live coverage • Live events • Cultural magazines

AID AMOUNT

- Maximum 45% of the projected budget
- Assistance caps:
 - Audiovisual: from €15,000 to €200,000 according to the nature and duration of the work
 - Cinema: no caps - aid amount set according to the proposed project



Information concerning assistance and application forms for funding are available for download on the INVEST IN REUNION website

www.investinreunion.com

& on the website of the Regional Council of Reunion

www.regionreunion.com

Your contacts in Reunion

THE REGIONAL COUNCIL OF REUNION ISLAND

The Regional Council of Reunion Island provides support to this sector through financial aid within the POE (Operational Plan for Europe), as well as other funding schemes aiming to further develop the sector: providing support for professional training courses and developing infrastructure, most notably for broadband connections...

@ For further information: www.regionreunion.com



DIGITAL REUNION

The Reunionese Association of Information and Communication Technology shares all the latest digital news and brings together industry players for important projects.

@ For further information: www.digitalreunion.com



THE TECHNOPOLE OF REUNION

The Technopole of Reunion hosts and supports technological and innovative activities, particularly in the field of digital.

@ For further information: www.technopole-reunion.com





AGRI-FOOD

A territory of excellence in tropics zone

In recent years Reunion's Agri-Food Industry has progressed constantly.

As the number one industry in Reunion, it has bolstered its own expertise, in particular by diversifying local agricultural production and with an ever-increasing development of agro-industrial skills thanks to efficient industrial facilities.

Today, innovation within the agri-food industry enables the continuous improvement of expertise and know-how, and the opening up of new horizons in terms of both products and geographical sector.



➔ Agri-food in numbers...

- # 1st position for export value, at 174.2 million Euro in 2014
- # Four main sectors: sugar, milk, drinks, meats
- # 117 large supermarkets, selling predominantly food, with an average density of 193m² for 100 habitants (2012)
- # Rate of added value of the agri-food industry in Reunion: 20% (business with 20 employees or more, excluding independent traders) in 2012

Sources : Customs / Insee – ESANE / SSP / DAAF Réunion

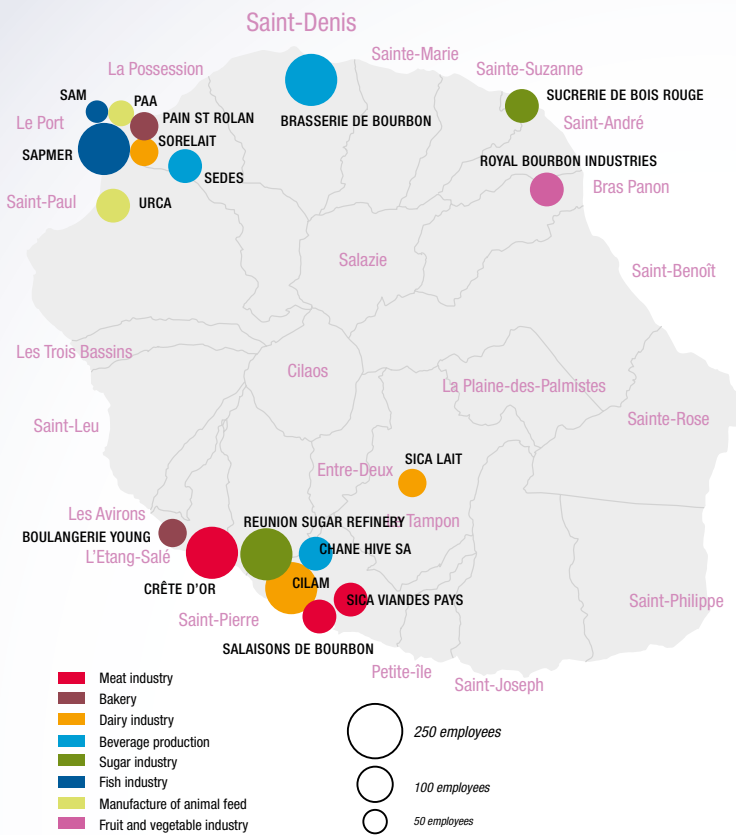
➔ Dynamic agri-food businesses

- # 54 businesses with 20+ employees
- # 3,250 salaried workers
- # Turnover (excl. tax): €1019M
- # Added value: €208M
- # Revenue from export: €106M
- # Rate of investment: 61%

Sources : Insee – ESANE / SSP / DAAF Réunion in 2012 (companies with 20+ employees, excluding independent traders)

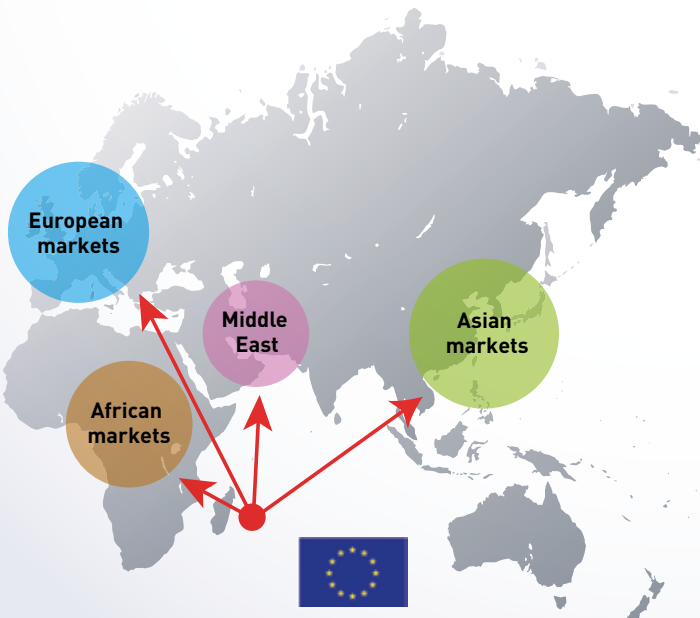


MAJOR AGRI-FOOD SECTORS



Source : INSEE / CLAP 2010 - Realization of the map : SISE / DAAF Réunion

REUNION, IN THE HEART OF THE INDIAN OCEAN



➔ The Agri-Food Industry is evenly distributed across the island:

The main activities are focused in three geographical areas:

- # The south, with greater diversity between Etang-Salé and St-Pierre
- # The west, concentrated in Le Port, La Possession and St Paul
- # The north-east, from St Denis to Bras-Panon

➔ QUALIREG, Indian Ocean agri-food network

Managed in Réunion by the CIRAD, QUALIREG is a technical and scientific network bringing together different organizations from Réunion, Madagascar, Comoros, Mauritius and the Seychelles.

It aims to improve the quality of farming and food production in the Indian Ocean zone.

- # Food safety
- # Development of quality products
- # Intensification of trade in the area
- # Emergence of high quality, competitive, sustainable and responsible sectors



An innovative R & D sector

Overseas France's only business cluster: **Qualitropic** « innovation and natural resources in the tropics »: a unique tool to boost competitiveness and diversification in agriculture

1 technological resource centre for agri-food

2 technological resource centres in aquaculture and marine biology

Laboratories and technical platforms devoted to agri-food or valorization of natural resources

A European research centre for sugar cane: eRcane



Qualified Human Resources

The island's education system provides quality specialized training programs:

Professional Baccalaureate specialized in bio-processing industries

BTS (Technician Certificate) studying quality in food industry and bio-industries

DUT (Technology Degree) studying bioengineering with agri-food and biological industries

Professional Degree Course in the agri-food and biology sector specializing in quality, health & safety and the environment

Engineering Degree specialized in agri-food

A UNIQUE ISLAND with renowned expertise

The agri-food industry in Reunion has a great potential for high quality added value 'niche' products.



THE VICTORIA PINEAPPLE

This small Reunionese pineapple (Red Label) is harvested almost all year round, and has a truly unique flavour and aroma - it is considered one of the best pineapples in the world.



ESSENTIAL OIL MADE FROM REUNIONESE GERANIUMS

It has unique and internationally recognized properties, and is notably used by a Canadian company to produce a treatment for diabetics.



REUNION'S 'BOURBON' VANILLA

History has it that a young man from Reunion by the name of Edmond Albius was the very first to develop the vanilla fertilization process used throughout the world today. Its intense flavour is incomparable.



MEDICINAL AND AROMATIC PLANTS (MAP)

Reunion has 835 indigenous plant species of the Indian Ocean area, of which 234 are strictly endemic to Reunion. It is home to 200 medicinal plants and many aromatic plants. These medicinal and aromatic plant resources are full of many opportunities: medicine, herbal teas, cosmetics, food, phyto-sanitary and veterinary products, and perfumes.



THE RED LABEL LYCHEE

This beautiful red fruit is harvested when fully ripe, and is especially plump and tasty. Its pulp is perfectly sweet and aromatic, making it really stand out from other lychees around the world.



THE CREATION OF NEW SUGAR CANE VARIETIES

It takes 15 years to develop a new variety of sugar cane. With its different microclimates, Reunion has been able to experiment and create varieties specifically adapted to the climatic conditions of the different regions of production. These 'Reunionese' sugar cane varieties are sold in sugar-producing countries.



BOURBON POINTU COFFEE

This unique coffee was brought into Reunion at the end of the eighteenth century, and has been awarded the sought-after 'Premium Coffee' label by the Japanese Association of specialty coffees, only assigned to flawless products with a marked flavour.



SPECIAL SUGARS, RUM AND ALCOHOL

Reunion has a recognized and sought-after expertise for specifically refined white, brown and special sugars. Reunionese expertise is also well established for rum manufacturing, with various existing product ranges which have won both national and international awards on several occasions.



A UNIQUE GASTRONOMY

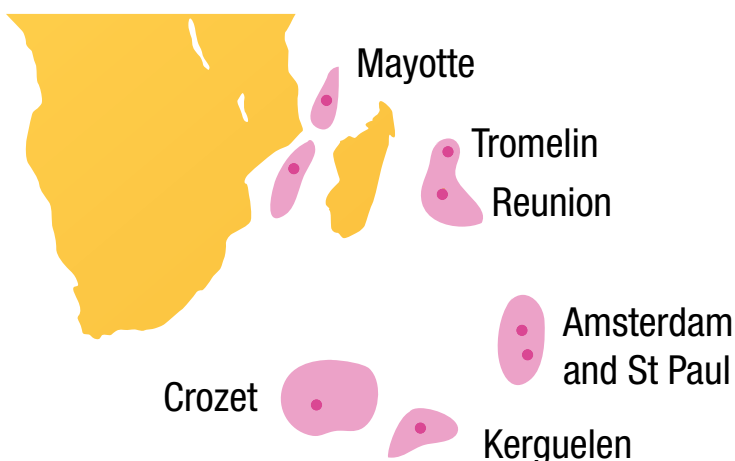
Reunion's unrivalled gastronomy has its roots in African, Asian and European cultures, and has started to export into some niche markets (Asia, Middle East).

Reunion Island, an ocean of resources

The Reunionese fishing industry operates in an environment which is rich in resources, and has considerable growth potential.

Large-scale industrial fishing takes place offshore towards the sub-Antarctic waters of Kerguelen and Crozet where choice specimens such as toothfish, lobsters, rays and grenadiers are fished.

With an **Exclusive Economic Zone (EEZ) covering 2.8 million km²**, the Reunionese fishing industry is the island's **2nd source of export revenue, representing €49.7m in 2014**. Almost all of the production is sold for export, mainly to Asia, after processing in our ultramodern local packaging plants.



Local organic farming in full growth

HIGH ADDED VALUE NICHE PRODUCTS

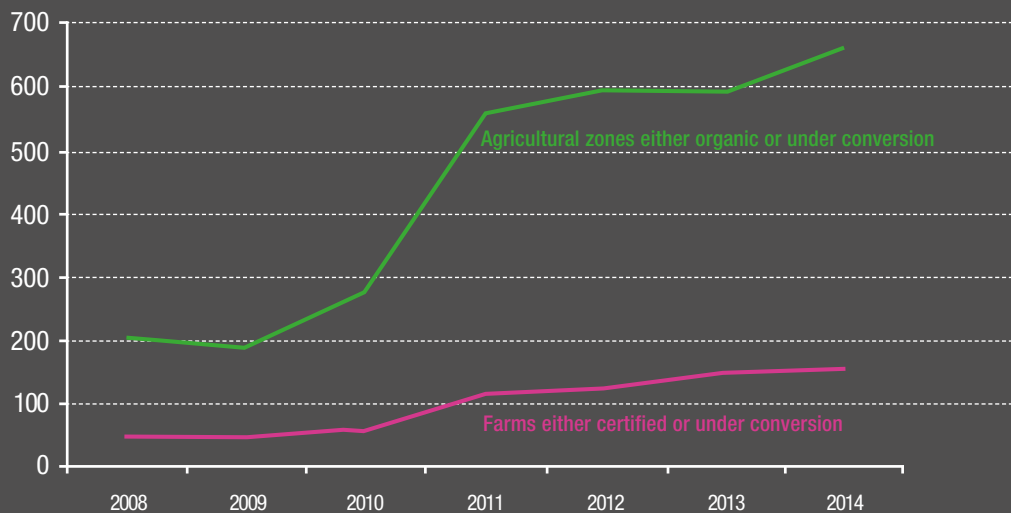
For around ten years now the market for organic products has seen considerable growth in Reunion.

This can be seen by an increase of surface area and the number of farms which now have the organic certification (or are awaiting certification), the production of diverse and quality organic fruit and vegetables, and the ever-increasing numbers of dynamic farmers and efficient involvement from those working in the organic food industry.

Rich in agricultural resources, Reunion Island has the capacity to grow and develop its own local organic industry. Organic production in Reunion has seen strong growth in the number of «certified» farms or those under «conversion» since 2010, 26% of the average annual growth. Its total surface area for organic production was 659 hectares in 2014 or 24% of annual growth (2010/2014).

ORGANIC AGRICULTURE ZONES AND FARMS CERTIFIED OR UNDER CONVERSION

Source : Agence Bio



These advantages place Reunion Island first among the Overseas Territories of France in terms of agricultural organic potential.

REGIONAL FUNDING MEASURES

specific to the agri-food industry*

Agri-food is one of the priority areas identified for accompaniment by the Regional Council of Reunion, enabling companies in this sector to benefit from attractive support measures through this scheme.

Investment aid
for setting up
businesses*

AMOUNT

up to
50 %

of the eligible amount.

OBJECTIVES

To reduce capital cost in order to offer the trade and industry sectors a better environment that will encourage the creation of new businesses.

BENEFICIARIES

Businesses regularly listed with the RCS or RM of Reunion that have been in business less than 3 years.

AID AMOUNT

- # The programme of investment must be at least €10,000 (eligible expenditure excl. tax)
- # Grant rates: from 20% to 50%
- # Cap: €1.5M

See page 45 «Focus on regional innovation aid»

*This type of aid is applicable to all trade and industry sectors



Creation or modernisation of animal production units*

OBJECTIVES

- # To continue efforts initiated in 2007 by animal industries towards gaining better livestock production tools and in relation to the strategic development objectives already set out (DEFI project for the Development of Livestock and Interprofessional Industries, conquering new markets, dealing with imports, increased number of locally produced animals).
- # To enable the technical and technological adaptation of production units in line with more efficient production methods, consuming less energy, compliant with best farming, agronomic, health and environmental practice.
- # To assist in the modernisation or adaptation of existing animal production units thus strengthening the sustainability of the related farms.
- # To put in place treatment/repurposing units for livestock effluents (beyond statutory regulations) as part of the development of the agricultural bio-economy (financial exploitation of by-products and agricultural waste) and a reduction in the environmental print of island farming activity.

BENEFICIARIES

- # Farmers (physical or legal person) undertaking farming activity.
- # Association of legally united farmers whose main objective is the growth of animal and vegetable production. Farming associations are made up of 100% farmers.

ELIGIBLE EXPENDITURE

- # Work, new materials and equipment for construction and development or for extending livestock buildings and their annexes
- # Modernisation work on livestock buildings, equipment and their annexes intended for animal production
- # Investments linked to the improvement of livestock management
- # General costs directly linked to expenditure intended for and necessary to the preparation and execution of things like: engineering, feasibility and/or economic and/or environmental impact studies, regulatory studies, project management assistance
- # Non-tangible investments: purchase or development of IT solutions (software, software packages).

AID AMOUNT**

1. Investments (excluding general costs) :

Base rate: 50%

Increase (cumulative up to 70%)

2. General costs:

Unique rate of 75%, capped at an overall aid amount of €5,000 for the whole project. General costs cannot exceed 10% of the eligible expenditure.



*Projects will be selected by the Programming Committee following recommendation from the committee service once the project has been assessed.

**This measure can be combined with additional national tax exemption funding and VAT NPR within the public aid limit cited in Regulation (EU) no. 1305/2013. If there is a difference between the aid rate stipulated by Regulation 1305/2013 and that stipulated by statutory aid rules, the lowest rate is applicable.

Farming mechanisation and equipment*

OBJECTIVES

To continue efforts to modernise farms via the mechanisation and automation of production channels and promoting collective approaches like CUMA (coopératives d'utilisation de matériel agricole [cooperatives for the use of agricultural equipment]).

BENEFICIARIES

Farmers enlisted primarily with AMEXA (Assurance Maladie des Exploitants Agricoles [Farmers' Health Insurance]) with a farm based in Reunion.

For farming companies: social capital must be held at more than 50% (or 100%) and the farm base must be located primarily in Reunion.

ELIGIBLE EXPENDITURE

The types of equipment, towed or self-supported and intended for the following operations at the farm:

- traction
- farming-only transport
- tillage
- planting
- harvesting
- treatment
- cultivation
- handling
- breeding or handling of livestock or other farm animals
- automation of technical channels

General costs directly linked to expenditure intended for and necessary to the preparation and execution of things like: engineering, feasibility and/or economic and/or environmental impact studies, regulatory studies, project management assistance.

Non-tangible investments: purchase or development of IT solutions (software, software packages).

AID AMOUNT**

1. Investments (excluding general costs):

Base rate: 40%

Increase (cumulative up to 75%):

2. General costs:

Unique rate of 75%, capped at an overall aid amount of €5,000 for the whole project. General costs cannot exceed 10% of the eligible expenditure.



*Projects will be selected by the Programming Committee following recommendation from the committee service once the project has been assessed.

**This measure can be combined with additional national tax exemption funding and VAT NPR within the public aid limit cited in Regulation (EU) no. 1305/2013. If there is a difference between the aid rate stipulated by Regulation 1305/2013 and that stipulated by statutory aid rules, the lowest rate is applicable.

Agri-food Industrial Resources*

OBJECTIVES

This measure is aimed at improving the way local agricultural products are processed and marketed (products featured in annex I of the Treaty on the Functioning of the European Union) by supporting investment in agri-food businesses in order to:

maintain and encourage the creation of jobs and increase overall output in terms of technical efficiency, commercial competitiveness and added value.

stimulate innovation by implementing new market opportunities for better quality products.

promote a better control over resources and the use of renewable energy.

back processes and technical procedures that comply with EU standards regarding the prevention of industrial pollution, the environment, hygiene and animal welfare.

BENEFICIARIES

All businesses from the agri-food sector, including large companies that promote the marketing and/or development of agricultural products under annex 1 of the Treaty on the Functioning of the European Union (excluding fishery products) are eligible (excluding associations).

ELIGIBLE EXPENDITURE

Cost related to the project, including:

construction, purchasing or modernisation of real estate

purchase or lease of new and used materials and equipment (according to the terms of article 13,

EU regulation no. 807/2014) and the term of the decree regarding interfund expenditure eligibility)

general costs related to investment, including architect fees, engineer and consultant salaries, costs related

to advice on environmental and economic sustainability, including costs related to feasibility studies.

AID AMOUNT**

Amount of public aid

35% for projects with sugar companies

20% to 50% for other projects.



Investment for the modernization of vessels

OBJECTIVES

Funding for the modernization of vessels aims to provide sustainable upkeep of Reunion's fleet of fishing boats, to increase safety and health on board vessels, to increase fishing selectivity, to promote energy conservation and to reduce the offloading of waste at sea. This is a source of jobs and a factor of social cohesion.

ELIGIBLE SPENDING

• The replacement of a motor in accordance with the regulatory supervision of the fleet • The acquisition of safety equipment made mandatory on vessels after January 1st 2007 • The acquisition of electronic materials and aids for navigation and fishing • The installation of selective fishing equipment to avoid unwanted bycatch • Investment for material permitting the on-board conservation of species for whom discarding at sea is no longer allowed • Equipment contributing to a better adaptation of energy consumption

BENEFICIARIES

A 'company or individual', owner or charterer of a ship registered in Reunion and working professionally in the maritime fishing industry

AMOUNT

For vessels of a length of 12 metres or less: 50% of eligible spending # For vessels over 12 metres long: 40% of eligible spending

Limits depend on vessel size and goods tonnage capacity

CONDITIONS

• Maintain investment and usage for at least five years from the date the decision for public funding has been granted • Carry out modernization investments within a maximum period of one year • Provide full accounting records for the ship or its fittings at the moment the funding is granted • The vessel concerned by this modernization grant must be an active and capable member of the fleet of Reunion, aged between 5 and 30 years old at the time the grant request is filed

*Projects will be selected by the Programming Committee following recommendation from the committee service once the project has been assessed.

**For this category of project, the rate will be increased by 20% (within the maximum permitted rate) for beneficiaries who are able to demonstrate when submitting their application that no legal structure has enabled them to benefit from so-called «tax exemption» devices (benefiting from a reduction of income tax or base tax for new productive investments made by companies set up in Reunion), notified by France.

For projects that do not fall under article 42 of the TFUE for which funding is subject to rules of statutory aid, the following will be used:

• an aid scheme exempted by notification under Commission Regulation (EU) no. 651/2014 of 17 June 2014, or under Commission Regulation (EU) no. 702/2014 of 25 June 2014;

• or a notified scheme pursuant to article 108, paragraph 3 of the Treaty;

• or Commission Regulation (EU) no. 1407/2013 of 18 December 2013 relating to the application of articles 107 and 108 of the Treaty on the Functioning of the European Union for de minimis aid.

This measure can be combined with additional national tax exemption funding and VAT NPR within the public aid limit cited in Regulation (EU) no. 1305/2013. If there is a difference between the aid rate stipulated by Regulation 1305/2013 and that stipulated by statutory aid rules, the lowest rate is applicable.

Productive investments in aquaculture

RATE

50%

of eligible costs

OBJECTIVES

The support for productive investments in marine and freshwater aquaculture aims to:

- # Increase the quantity of aquaculture production sold on the local market and for export, as well as product diversification,
- # Consolidate existing production equipment to improve company competitiveness.

ELIGIBLE SPENDING

- The construction, extension and modernization of aquaculture production businesses
- The acquisition and modernization of production means, including transport at sea and commercialization
- Development or improvement of water circulation within aquaculture companies
- Compliance with health and environmental regulations of livestock farms.

Eligibility is granted for any material and / or construction useful for the production and operation of aquaculture companies

BENEFICIARIES

Private companies, collective aquaculture associations, fishermen aiming to diversify into aquaculture.

AMOUNT

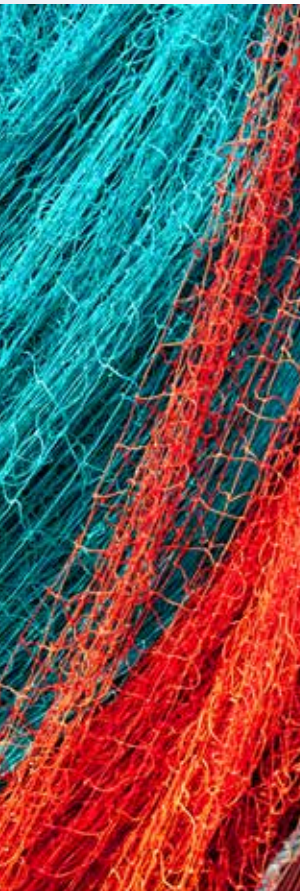
Rate of 50% of eligible costs

CONDITIONS

Maintain an inventory of subsidized equipment

- Upkeep investment and usage for at least five years from the date the decision for public funding has been granted
- Provide data concerning production volumes and values for a period of 5 years, as well as the company accounts to the acting overseer.





Processing and commercialization of produce from fishing and aquaculture

AMOUNT
from **30**
to **50%**
of eligible spending
depending on the size
of company

OBJECTIVES

Aid for investment and the procurement of materials and equipment in produce processing and packaging, aiming to help structure Reunion's market for fishing and aquaculture produce and to ensure stocks are sold

ELIGIBLE SPENDING

Eligibility is granted to:

material for handling products • refrigeration equipment • computer equipment directly related to production activity • investment for transporting goods to reception and storage centres • investment for the sale of products which have been unloaded in places without the adapted sales facilities • material for product processing • investments needed to improve working conditions and to help companies adapt • requirements for the protection of the environment • investment aiming to promote and valorize products • necessary investments to ensure food safety and the treatment of waste...

BENEFICIARIES

Private individual firms or collective structures, and initial purchasers for products from fishing and aquaculture

Eligible and subsidized investments must be only used for products which come exclusively from the production of Reunionese vessels and / or local aquaculture

CONDITIONS

Maintain an inventory of subsidized equipment • Upkeep investment and usage for at least five years from the date the decision for public funding has been granted • Increase turnover by a minimum of 5% between two public funding grants during the period 2007-2013 • Provide company accounts for a period of 5 years to the relevant department

Your contacts in Reunion

THE REGIONAL COUNCIL OF REUNION ISLAND

Investing in agri-food in Reunion means benefiting from extra support offered by the Regional Council of Reunion to this priority area, through the implementation of specific support schemes including the diversification of agricultural production, the creation or development of new tourism or educational products, the development of agro-industrial tools, etc.

@ For further information: www.regionreunion.com



REUNION CHAMBER OF AGRICULTURE

Its overall mission is to lead and develop the rural territories of Reunion in order to develop the land's agricultural potential through the formulation and monitoring of plans from agricultural development managers

@ For further information: www.reunion.chambagri.fr



ARIPA

ARIPA is the Association Réunionnaise Interprofessionnelle de la Pêche et de l'Aquaculture, or the Reunion Interprofessional Association of Fisheries and Aquaculture, which promotes the development of the industry and its various core businesses.

@ For further information: www.aripa.re



DAAF RÉUNION

In a single organisation, the Direction de l'Alimentation, de l'Agriculture et de la Forêt de La Réunion, or the Reunion Directorate for Food, Agriculture and Forestry, focuses on all the missions of the Ministry of Agriculture, Food, Fisheries, Rural Affairs and Spatial Planning. Its role is to ensure the development of local production and to contribute to sustainable agriculture through dynamic food policies.

@ For further information: www.daaf974.agriculture.gouv.fr



ADIR

The role of the Association pour le Développement Industriel de La Réunion, or the Association for the Industrial Development of Reunion, is to promote local existing and upcoming industries, as well as the employees operating within and their various products. It is also tasked with resourcing studies and research on industrial development as well as technical support to aid performance on the whole.

@ For further information: www.adir.info



QUALITROPIC

Its role is to support R & D projects aimed at developing products and processes that respect the environment based on natural tropical resources in the sectors of agri-food, biotechnology and health.

@ For further information: www.qualitropic.fr





RENEWABLE ENERGY AND THE ENVIRONMENT

A naturally renewable island

Reunion boasts certain advantages (sunshine, sea, waves and wind ...), making it an island which is rich in opportunities and skills for the development of renewable energy, and a favourable context for the creation of innovative environmental projects.



RENEWABLE ENERGY



Reunion Island, a laboratory for future solutions

Reunion boasts tremendous advantages in the areas of renewable energy (ENR) and biodiversity.

Due to its size, mountainous terrain and history, Reunion Island has today become an exceptional testing site for energy technology and processes.

The island has a considerable amount of sunshine and ideal exposure to the winds, as well as an interesting potential for marine energy which has encouraged the development of many different projects.

Innovative projects launched in Reunion today will in the future be able to thrive on a larger scale across the planet.



→ **33%**
of electricity produced
comes from
renewable sources

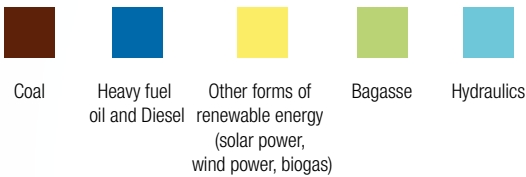
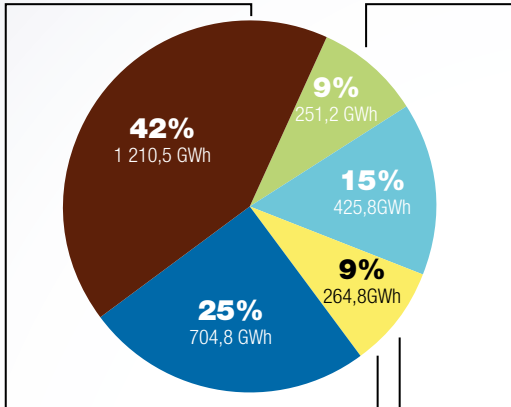
→ **200** companies

→ **2,766** jobs
in the energy sector

TOTAL ELECTRICITY PRODUCTION

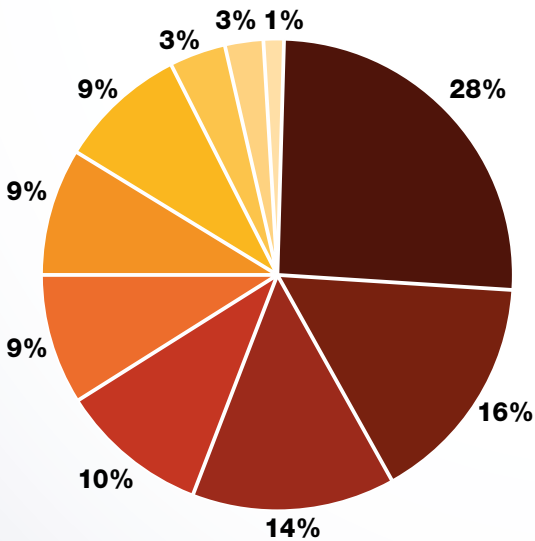
by energy type for 2014

Fossil fuels **67%** Renewable energy **33%**

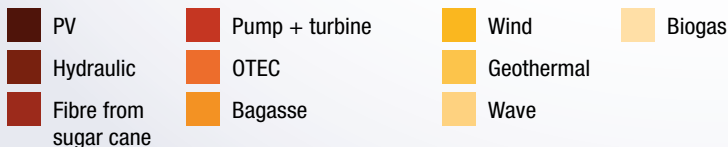


ENERGY COMBINATIONS FOR 2030

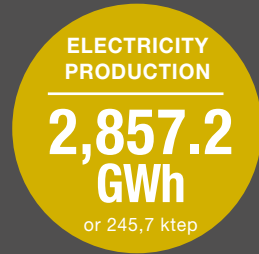
- A first case scenario -



Auteur : oer (Reunion energy observatory)



Electricity production in Reunion Island



ENR, part of the island's ambitious future

Because of the island's natural resources, the **Regional Council of Reunion** implemented policies in 2002 which aim to support sustainable development as part of the **PRERURE** program - Regional Plan of Renewable Energies and Rational Use of Energy.

The key objective is to attain energy autonomy by 2030.

In 2009, this commitment resulted in the creation of a project called **STARTER** (Strategy for Energy Independence, Transition and Recovery of the Reunionese Economy). This strategic program explores the possibilities of implementing an energy mix which is completely free of any fossil fuel dependence by 2030 through the use of different renewable energy sources.

Investing in renewable energy in Reunion also means making investments which are environmental, sustainable and perfectly reliable.

Sources : CTBR / CTG / EDF - Author : oer (Reunion energy observatory)

AN ISLAND of opportunities and skills

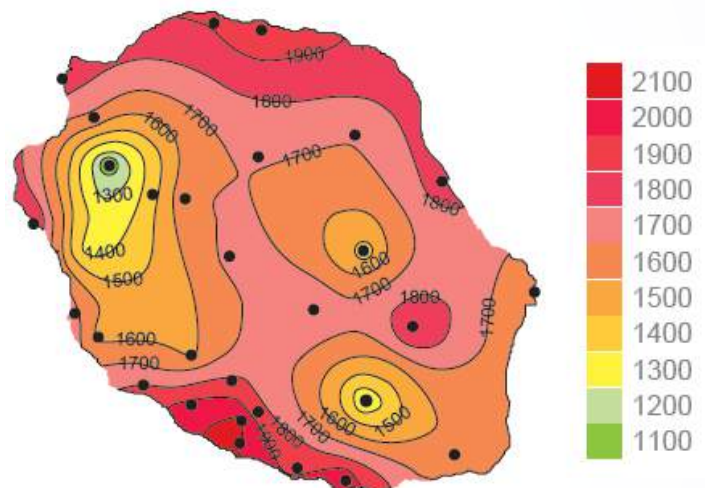
Rich in natural resources, Reunion has become a territory of excellence for renewable energy and energy management.

Solar Energy

The development of solar power thanks to high levels of sunshine

Reunion benefits from 30% more luminosity than mainland France, reaching levels of up to 1,900kWh/m². The average amount of sunshine is around 1,350 hours per year, with peaks reaching 2,000 hours / year.

Cumulative average annual amount of horizontal luminosity in kWh/m²



Biomass

Transforming biomass resources

Biomass resources such as wood and bagasse (sugar cane and cane fibres) could provide a potential production of 756 GWh / year by 2020.

Wind Energy

High potential for wind energy

Reunion has good wind potential at a height of 30 metres, with 62% of the island's surface area which is exposed to winds of speeds between 6 and 7 m / s. A production target of 60 to 70 MW (maximum) is planned for 2025.

Potential for the development of «Smartgrids»

As an island, Reunion boasts an intensified and specific array of energy and environmental assets, as well as complex issues at stake, making it an ideal place for experimenting in the development of new energy technologies, such as intelligent networks known as « Smartgrids ».

Marine Energy

A potential for the development of many different technologies

As well as Reunion's exposure to the southern trade winds, the structure of its seabed, the properties of the surrounding ocean currents, the island's relief and its many streams and rivers all make for a promising future for the development of marine energy.





FUNDING MEASURES

specific to the ENR sector*

Renewable energy and the environment form part of the priority areas identified for accompaniment by the Regional Council of Reunion. Companies in this sector can benefit from attractive support measures through the scheme called 'Provision of environmentally-friendly energy'.

OBJECTIVES

The objective of the public authorities is to reduce the island's energy dependence by building on all levers likely to prove competitive in this field. These efforts cover not only the implementation of existing technologies but also research and development of new technologies and resources.

ELIGIBLE SPENDING

- # Expenses for the acquisition, installation and commissioning of facilities, particularly those for solar, thermal, photovoltaic, hydroelectric, geothermal, wave and wind power
- # Operations using energy rationally (whether in industry, construction or transport) are concerned and are therefore eligible for ERDF funding
- # DSM actions (Energy Demand Management) are particularly relevant (industry and construction), and the contracting authorities concerned can be from the private or public sector
- # Preliminary studies (for aid in decision-making and feasibility studies in particular) and prospecting studies (market surveys) are also eligible

BENEFICIARIES

Companies of all statuses • Public companies, local authorities, joint venture companies • Associations involved in the energy sector • Property management firms located in Reunion

* Applications must be submitted to the FEDER reception for the Reunion Region or directly to the Reunion Region, according to the aid required

AMOUNT OF AID AND ELIGIBLE SPENDING

PROMOTING RENEWABLE ENERGY PROJECTS BIOMASS AND BIOGAS

TYPE OF ACTIVITY	TYPE OF EXPENDITURE	AID RATE
Equipment for combustion, gasification, methanation of biomass as well as reversible thermodynamic devices (ORC cycle)	Purchase of equipment, installation, civil engineering, connection to network	For Small Businesses: 80% of eligible costs For Medium-sized Businesses: 70% of eligible costs For Large Businesses: 60% of eligible costs For public bodies: 80% of eligible costs FEDER grant cap per project: €3M
Equipment for energy development, intermittent thermal energy, mainly for the production of cold including solar cooling material (the production of cold via thermal fluid produced by solar collectors)	Purchase of equipment, installation	For Small Businesses: 80% of eligible costs For Medium-sized Businesses: 70% of eligible costs For Large Businesses: 60% of eligible costs For public bodies: 80% of eligible costs For solar cooling, the amount eligible is capped at €4,000 per kW of cold and grants depending on the activity are capped at €50,000 per equipped site

PRODUCTION OF HOT WATER VIA SOLAR POWER

TYPE OF ACTIVITY	TYPE OF EXPENDITURE	AID RATE
Installation of for solar hot water producing equipment in current rented/social housing	Solar installation additional cost compared to an equivalent electrical solution	For Small Businesses: 80% For Medium-sized Businesses: 70% For Large Businesses: 60% Eligible amount cap: €4,000 per accommodation
Use of solar power for hot water production in the public sector		80 %
Installation of individual solar equipment in the homes of those in financial difficulty	Installation of solar water heater	Grant cap (FEDER + REGION) of €2,000 per solar water heater



THE ENVIRONMENT

Reunion is a modern and strong-willed island in environmental matters. Strengthened by European laws, the rapid growth in both population and economy has led to the development of this strategic market.



In numbers...

- # One of 10 marine biodiversity hotspots
- # A national park covering 42% of the nation's surface, or 105,509 hectares
- # 11 biological reserves
- # High amount of waste for reclamation: 547,100 tonnes of household waste or similar (666.36 kg per capita) and 1,261 490 tonnes of waste from financial activity in 2011. Almost 4 million tonnes of construction waste*
- # more than 2,300 salaried jobs in production, water distribution, sanitation, waste management and clean-up; including 1,600 just in waste collection and treatment**



One of the world's
→ **34**
biodiversity HOTSPOTS
→ **35 km²**
of nature reserves

Sources: Insee // CERBTP Réunion*



A land of opportunities

An environmental center of excellence



In the field of the environment, Reunion Island is a veritable centre of environmental excellence, with a wide array of opportunities for research and innovation.

Reduction, reclamation and recycling of waste

A high amount of waste for reclamation: many opportunities in terms of strengthening the current industry (wood, metal, cardboard, plastic, tyres, medical waste, off-road vehicles, ink cartridges, etc.) and developing untapped sectors (used cooking oil). Under the Basel Convention, Reunion must export non-locally reclaimed hazardous waste to the European Union. Due to the 100,000 tonnes of waste exported in 2014, representing 21 million Euro, the creation of local reclamation channels is strongly encouraged. The principle of the expanded responsibility of the producer that applies to Reunion offers opportunities to implement local recycling channels: batteries, tyres, battery cells and accumulators, household WEEE (waste electrical and electronic equipment)^{***} and lamps.

Management and implementation of 'clean' transport systems

Water management, air quality and ecosystems

There is a huge potential with the opportunity to experiment with innovative solutions (micro waste water treatment plants, phyto-filtration and bioremediation systems), thanks to significant resources and growing needs.

Sustainable Agriculture

Reunion Island is currently France's fourth largest area for sustainable farming, with 155 farms. It also has 31 certified 'organic farming' operations.

Source : Agreste, Agricultural Census 2010

Sustainable Eco-construction

Reunion enjoys a high level of expertise for construction in tropical climates, which is in high demand in the countries across the Indian Ocean area and other tropical countries.

^{***}Waste from Electrical and Electronic Equipment
^{**}Source : Customs
^{*}VHU Disused vehicles



HIGH LEVELS of skills and expertise

Thanks to technological development, an advanced infrastructure, a high level of research and a well-trained and quality workforce, Reunion boasts a high level of expertise in the environmental sector.

SPECIALIZED TRAINING COURSES provided by high-level structures

Reunion has a workforce educated at high-level structures which provide specialized training courses up to Master's level.

These courses are on offer at the University of Reunion, the ESIROI (Indian Ocean Higher Education Engineering School of Reunion), the University Institute of Technology and some high schools providing preparatory courses for professions such as: executives, engineers, project managers, technicians, project leaders, architects and consultants.

Examples of training courses on offer in Reunion

- # University Technology Diploma in Biological Engineering, specializing in Environmental Engineering
- # Vocational degree in Agriculture and sustainable development in tropical island climates
- # Master's degree in Tropical Biodiversity and Ecosystems
- # Engineering degree in Sustainable Construction and Environment

AN ISLAND AT THE CUTTING EDGE OF RESEARCH

Reunion has an excellent capacity for environmental research, thanks to:

THE PRESENCE OF MAJOR FRENCH RESEARCH CENTRES AND INSTITUTES:

IRD (Research Institute for Development), **BRGM** (Bureau of Geological and Mining Research), **IFREMER** (French Research Institute for Exploitation of the Sea) and **CIRAD** (Centre for International Cooperation in Agronomic Research for Development)

RELIABLE AND WELL-EQUIPPED LOCAL RESEARCH CENTRES:

CIRBAT (Centre for Innovation and Research for Tropical Construction)

@ For further information: www.cirbat.re

CRITT REUNION - REGIONAL CENTRE FOR INNOVATION AND TECHNOLOGY TRANSFER

It also houses a division for Environmental Safety, Quality and Metrology

@ For further information: www.critt.re

FUNDING MEASURES

related to the environment*

Renewable energy and the environment form part of the priority areas identified for accompaniment by the Regional Council of Reunion. Companies in this sector can benefit from attractive support measures through this scheme.

Aid for waste management companies

OBJECTIVES

This measure aims to enable local businesses to attain specific environmental objectives:

- reducing pollution or nuisance (new activities)
- adapting methods or means of production in order to protect the environment
- implementing the Regional Plan for the Disposal of Special Industrial Waste (PREDIS) and the Regional Plan for the Disposal of **Non-Household Waste (PREDDAMA)**

ELIGIBLE SPENDING

- # Feasibility studies, planning, monitoring and evaluation
- # Studies for defining and organizing activities, waste recycling or disposal
- # Equipment and tools to meet PREDIS-PREDDAMA requirements
- # Communication programs, awareness campaigns and training schemes aimed at empowering businesses

BENEFICIARIES

Companies listed at the legal registers of Reunion Island (Directories of Trade, Commerce and Services), and headquartered in Reunion

AMOUNT OF AID

- # **Initial reduction: SME-VSE: 60%** // Large companies: **50%**
- # **Valorization: 50%**
- # **Local treatment: 40%**
- # **Export or stabilization: 30%**

A bonus of 10 points is granted for projects that meet the needs of a creation of a new activity sector

- # **Cap for public subsidies: €1,000,000 / project**

OTHER MEASURES RELATED TO THE ENVIRONMENT SECTOR CAN BE ACCESSED:

The Water Board offers a range of financial aids for operations relating to the improvement of industrial sanitation, public awareness about water-related issues, or the implementation of water-saving systems in agriculture

@ For further information: www.eaureunion.fr

ADEME provides financial aid related to projects in the environment sector: support in decision-making (diagnostics, surveys), clean transport, investment in equipment for the treatment or reduction of waste, reducing CO₂ emissions

@ For further information: www.ademe.fr

*Applications must be submitted to the FEDER reception for the Reunion Region or directly to the Reunion Region, according to the aid required



Your contacts in Reunion



THE REGIONAL COUNCIL OF REUNION ISLAND

The Regional Council's ambition is for Reunion to achieve energy independence by 2025-2030. For this, it has several action programs and implements an array of funding measures for energy demand management and new energy development. The Regional Council set aside more than €20m in 2012.

@ For further information: www.regionreunion.com



TÉMERGIE

Energy Management Technologies, Renewable Energy and Isolated Energy Management

Reunionese business cluster for energy, bringing together forty professionals working in the areas of renewable energy, energy management and storage.

@ For further information: www.temergie.com



QUALITROPIC

Its role is to support R & D projects aimed at developing products and processes that respect the environment based on natural tropical resources in the sectors of agri-food, biotechnology and health.

@ For further information: www.qualitropic.fr



ADEME

Agency for the Environment and Energy Efficiency

As a national public institution, ADEME is closely associated with the implementation of state policies in sectors related to energy and the environment. It provides companies with technical and financial support.

@ For further information: www.ademe.fr



SPL ENERGIES RÉUNION

SPL Energies Réunion is responsible for promoting the use of renewable energies in the context of sustainable development in Reunion, particularly among the general public and local authorities.

@ For further information: www.energies-reunion.com





LIVING in Reunion

3

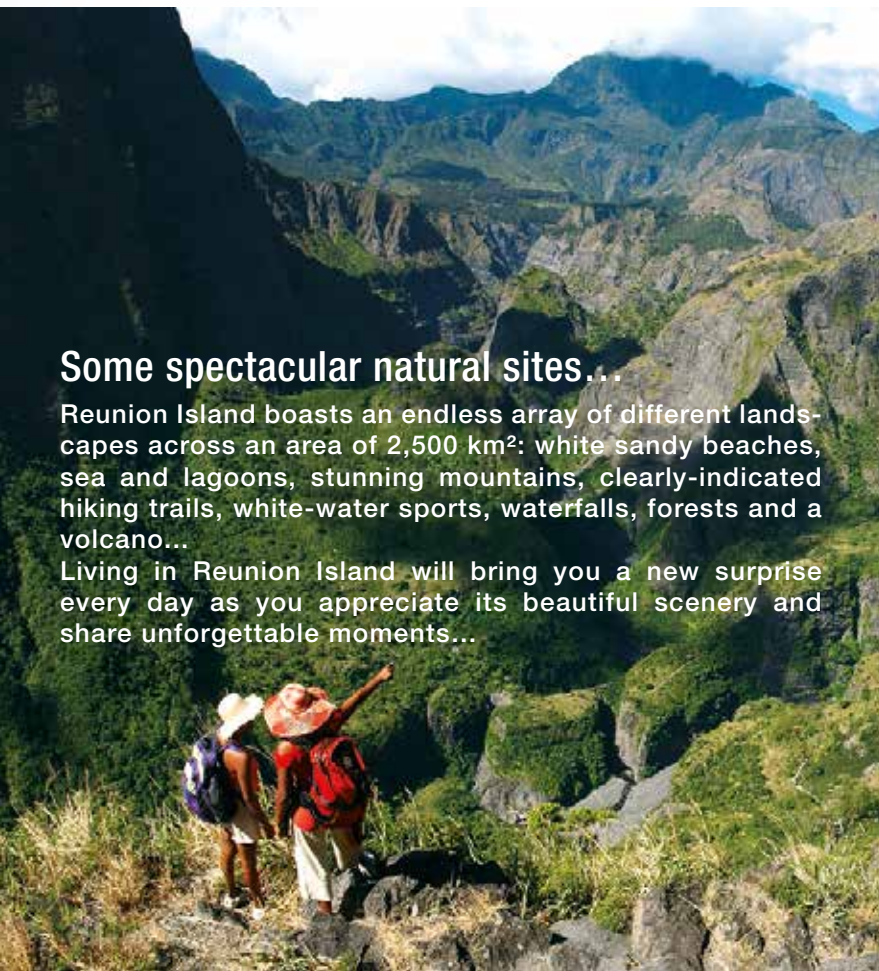
Setting up in Reunion...

Also means you can enjoy an exceptional quality of life all year round, on a beautiful island which has UNESCO World Heritage status.

Some spectacular natural sites...

Reunion Island boasts an endless array of different landscapes across an area of 2,500 km²: white sandy beaches, sea and lagoons, stunning mountains, clearly-indicated hiking trails, white-water sports, waterfalls, forests and a volcano...

Living in Reunion Island will bring you a new surprise every day as you appreciate its beautiful scenery and share unforgettable moments...




A pleasant and sunny climate all year round

Reunion has only two seasons (the other way round to Europe)

- The dry and mild austral winter from May to October
- The humid and hot austral summer from November to April





A small time difference between Reunion and mainland France

Despite the long distance between Reunion and mainland France, the time difference is relatively small:

+2h
in SUMMER

+3h
in WINTER



A harmony of different cultures

The people of Reunion are warm and welcoming, proud of their ethnic diversity, their unique capacity to live together in harmony, and an inestimable wealth of culture.



A rich cultural heritage

There are more than 140 historical monuments, including 20 which are classified, 5 state museums, departmental theatres, music and cultural festivals...



Combining a prime business environment
with an idyllic lifestyle,

*Reunion really is
a unique destination!*



**NEXA,
serving to
accelerate projects
of the future**

4



NEXA

Regional Agency for Development, Investment and Innovation

As an accelerator of projects in Reunion Island, NEXA's role is to support the island's economic development and increase its attractiveness.

MISSIONS

NEXA's missions focus on:

- # Structuring key sectors to increase competitiveness,
- # Developing companies' potential for innovation,
- # Managing and implementing policies to improve the island's appeal,
- # Increasing economic information and knowledge of the island,
- # Contributing to the development and implementation of regional strategies.

NEXA's work aims to strengthen the Reunionese economy's competitiveness and sustainability across key strategic sectors which are part of regional strategy:



Renewable energy



Agri-food



Digital



Tourism

INTERCONNECTED PROFESSIONS

To carry out its missions, NEXA relies on interconnected professions focused on prospective, promotion of networks, business monitoring, project engineering, implementation of promotional campaigns, and contribution to the structuring of new sectors.



A

Roland Garros Airport of Reunion
Tel: (+262) 262 48 80 00
Email: contact@reunion.aeroport.fr
www.reunion.aeroport.fr

Pierrefonds Airport
Tel: (+262) 262 96 80 00
Email: info@pierrefonds.aeroport.fr
www.pierrefonds.aeroport.fr

Agence de Gestion des Initiatives Locales en matière Européenne (AGILE) (Management Agency for Local European Initiatives)
Email: celleurope@agile-reunion.org
www.reunioneurope.org

Agence de l'Environnement et de la Maîtrise de l'Energie (ADEME) (Environmental and Energy Management Agency)
Tel: (+262) 262 71 11 30
Email: ademe.reunion@ademe.fr
www2.ademe.fr

Agence Film Réunion (AFR) (Reunion Film Agency)
Tel: (+262) 262 92 29 18
Email: courrier@agencefilmreunion.com
www.agencefilmreunion.com

Agence Française de Développement (AFD) (French Development Agency)
Tel: (+262) 262 90 00 90
Email: afd@afd.fr
www.reunion.afd.fr

APLAMEDOM
Tel: (+262) 262 93 88 18
Email: contact@aplamedom.org
www.aplamedom.org/

ARIPA - Association Réunionnaise Inter-professionnelle de la Pêche et de l'Aquaculture (Reunion Interprofessional Association of Fisheries and Aquaculture)
Tel: (+262) 262 42 23 75
Email: lcourtois.crpm@wanadoo.fr

Assurance Maladie des Exploitants Agricoles (AMEXA) (Farmers' Health Insurance)
Tel: 0 811 300 974
www.cgssmsa974.fr

Association Nationale de la Recherche et de la Technologie (ANRT) (National Association for Research and Technology)
Tel: 01 55 35 25 50
www.anrt.asso.fr

B

Bank of Reunion (BR)
Tel: (+262) 262 40 01 23
www.banquedelareunion.fr

Banque Française Commerciale Océan Indien (BFCOI) (French Commercial Bank for the Indian Ocean)
Tel: (+262) 262 40 55 55
www.bfcoi.com

Banque Postale (Postal Bank)
Tel: (+262) 262 479 479
www.labanquepostale.fr

BNP Paribas Réunion
Special rate no.: 0 820 84 08 30
Special rate no.: 0 810 252 252

www.reunion.bnpparibas.net

BRED BP / BRED Cofilease
Special rate no.: 0 820 33 64 91
www.bred.fr

Bureau de Recherches Géologiques et Minières (BRGM) (Geology and Mineral Research Bureau)
Tel: (+262) 262 21 22 14
www.brgm.fr

C

CAFINEO - société de financement (Finance Company)
Tel: (+262) 262 92 13 13
www.commerce.cafineo.fr

Caisse d'Epargne et de Prévoyance Provence-Alpes-Corse (CEPAC) (Fund and Pension Savings)
Tel: 0 821 010 043
www.caisse-epargne.fr

Caisse des Dépôts et Consignations (CDC) (Fund Deposits and Consignments)
Tel: (+262) 262 90 03 00
Email: dr.reunion@caissedesdepots.fr
www.valoffre.caissedesdepots.fr

Caisse Régionale de Crédit Agricole Mutuel de La Réunion (Reunion Region Farming Bank)
Tel: (+262) 262 40 81 81
www.ca-reunion.fr

Caisse Régionale du Crédit Maritime Mutuel (CRCMM) d'Outre-mer (Reunion Region Maritime Bank)
Tel: (+262) 262 42 12 25
www.creditmaritime-outremer.com

CASDEN Banque Populaire (Bank)
Tel: (+262) 262 21 08 40
www.casden.fr

CENTHOR-CCI Réunion (Reunion Tourism, Hotelier and Catering Training Centre)
Tel: (+262) 262 22 85 00
www.ccifformation.re

Centre de coopération Internationale en Recherche Agronomique pour le Développement (CIRAD) (International Agricultural Research Cooperation Centre for Development)

- Management
- Centre de Recherche et de Veille sur les maladies émergentes dans l'Océan Indien (CRVOI) (Centre for Research and Monitoring of Emergent Diseases in the Indian Ocean)

Tel: (+262) 262 93 88 05
• Laboratoire agroalimentaire du Cirad (Agri-food Laboratory)
Tel: (+262) 262 92 24 47

- Plate-forme de Protection des Plantes (3P) (Platform for the Protection of Plants)

Tel: (+262) 262 49 92 00
Email: bernard.reynaud@cirad.fr
www.umr-pvbm.cirad.fr

Centre de Formation Métiers Automobile et Transports (CFAT) (Automobile and Transports Training Centre)
Tel: (+262) 262 70 08 60

Centre d'innovation et de Recherche du Bâti Tropical (CIRBAT) (Centre for Innovation and Research of Tropical Construction)
Tel: (+262) 262 58 87 90
Email: jerome.vuillemin@cm-reunion.fr
www.cirbat.re

Centre National de la Recherche Scientifique (CNRS) (National Centre for Scientific Research) Unité Mixte de Recherche (UMR) (Mixed Research Unit)
Tel: (+262) 262 48 33 66
Email: contact@univ-reunion.fr
www.univ-reunion.fr

Centre Régional d'innovation et de Transfert de Technologie (CRITT) (Regional Centre for Innovation and Technology Transfer)
Tel: (+262) 262 92 24 00
Email: critt@reunion.cci.fr
www.critt.re

Centre Technique Interprofessionnel de la Canne et du Sucre de La Réunion (CTICS) (Reunion Interprofessional Centre for Cane and Sugar)
Tel: (+262) 262 30 33 44
www.ctics.fr

CGPME (Confédération Générale des Petites et Moyennes Entreprises) (General Confederation of Small and Medium-Sized Businesses)
Tel: (+262) 262 96 43 16
Email: contact@cgpme-reunion.com
cgpme-reunion.com

Chambre d'Agriculture de La Réunion (Reunion Chamber of Agriculture)
Tel: (+262) 262 94 25 94
www.reunion.chambagri.fr

Chambre de Commerce et d'industrie de La Réunion (CCIR) (Reunion Chamber of Industry and Commerce)
Tel: (+262) 262 94 20 00
Email: sg.dir@reunion.cci.fr
www.reunion.cci.fr

Chambre des Métiers et de l'Artisanat de La Réunion (Reunion Chamber of Skills and Trade)
Tel: (+262) 262 90 81 92
Email: cdm@cm-reunion.fr
www.artisanat974.re

Club du Tourisme (Tourism Organisation)
Tel: (+262) 262 58 30 47
www.clubtourisme.re

Cluster Green - Groupement Régional des Entreprises Engagées pour l'Environnement (Regional Association for Businesses Working for the Environment)
Contact: Christiane ALBERT - SICR
www.sicr.re

Compagnie Financière de Bourbon (CFB) (Bourbon Finance Company)
Tel: (+262) 262 71 13 71

Compagnie Générale d'Affacturage (CGA) (General Factoring Company)
Tel: 01 71 89 99 99
www.c-g-a.fr

Conseil général de La Réunion (General Council of Reunion)
Tel: (+262) 262 90 30 30

www.cg974.fr

Conseil régional de La Réunion (Regional Council of Reunion)

Tel: (+262) 262 48 70 00
Email: region.reunion@cr-reunion.fr
www.regionreunion.com

Conservatoire National des Arts et Métiers (CNAM) de La Réunion (Reunion National Conservatory for Arts and Crafts)

Tel: (+262) 262 42 28 37
Email: info@cnam.re
www.cnam.re

Crédit Moderne Océan Indien (CMOI) (Credit Company)

Tel: (+262) 262 92 04 04
Email: igp974@creditmoderne.re
www.credit-moderne.com

Cyclotron Réunion Océan Indien (CYROI) (Biotechnology Research Company)

Tel: (+262) 262 53 88 10
Email: c.meriau@cyroi.fr
www.cyroi.fr

D

DAAF

Direction de l'Alimentation, de l'Agriculture et de la Forêt de La Réunion (Reunion Directorate for Food and Forestry)

Tel: (+262) 262 938 800
Email: daaf974@agriculture.gouv.fr
www.daf974.agriculture.gouv.fr

Le Département de La Réunion

Tel: (+262) 262 90 30 30
www.facebook.com/CGREUNION
www.cg974.fr

DEAL

Direction de l'Environnement, de l'Aménagement et du Logement (Directorate for Development, Accommodation and the Environment)

Tel: (+262) 262 40 26 26
deal-reunion@developpement-durable.
gouv.fr

DIECCTE

Direction des Entreprises, de la Concurrence, de la Consommation, du Travail et de l'Emploi de La Réunion

(Reunion Directorate for Business,
Competition, Resources and
Employment)
Tel: (+262) 262 90 21 41
www.reunion.dieccte.gouv.fr

DIGITAL

Tel: (+262) 262 92 24 50
Email: mail@artic-asso.org
www.digitalreunion.com

E

Ecole d'Apprentissage Maritime (EAM) (Maritime School of Apprenticeships)

Tel: (+262) 2622 42 00 61
Email: eamr@wanadoo.fr
www.ecolemaritime.fr

Ecole d'Architecture du Port (School of Architecture)

Tel: (+262) 262 45 71 70

Email: ecole.d-architecture@wanadoo.fr
www.montpellier.archi.fr/reunion

Ecole de Gestion et de Commerce de La Réunion (EGC) (Reunion School of Sales and Management)

Tel: (+262) 262 48 35 12
www.egc-reunion.re

Ecole d'ingénieurs en informatique (SUPINFO) (School of Engineering and IT)

Tel: (+262) 262 28 79 01
Email: reunion@supinfo.com
www.reunion.supinfo.com

Ecole du BTP, du Centre d'Etudes Supérieures Industrielles (EI-CESI) (Centre for Higher Industrial Studies)

Tel: (+262) 262 70 08 65
Email: eibtp@reunion.cci.fr
www.eibtp.re

Ecole Supérieure d'Art de La Réunion (ESA) (Reunion School of Art)

Tel: (+262) 262 43 08 01
Email: contact@esareunion.com
www.esareunion.fr

Ecole Supérieure d'ingénieurs Réunion Océan Indien (ESIROI) (Reunion Indian Ocean School of Engineering)

Tel: (+262) 262 48 33 44
Mail: secretariat-esiroi@univ-reunion.fr
esiroi.univ-reunion.fr

Energies réunion SPL - société publique locale (Reunion Energy - local public company)

Tel: (+262) 262 257 257
Email: arer@arer.org
www.arer.org

eRcane - groupement d'intérêt économique (Economic Interest Group)

Tel: (+262) 262 28 21 29
Email: siegmund@ercane.re
www.ercane.re

Etablissement Public Local d'Enseignement et de Formation Professionnelle Agricole (EPLFPA) (Local Public Establishment for Professional Agricultural Training)

Email: reunion.webmaster@educagri.fr
www.reunion.educagri.fr

F

Fédération Réunionnaise de Tourisme (FRT) (Reunion Federation of Tourism)

Tel: 0810 160 000
Email: contact@reunion.fr
www.reunion.fr

Fortis Commercial Finance (FCF) Océan Indien - société de financement (Finance Company)

Tel: (+262) 262 92 25 55

G

Grand Port Maritime De La Réunion (GPMDLR) Reunion Port

Tel: (+262) 262 42 90 00
www.reunion.port.fr

IEDOM (Bank)

Tel: (+262) 262 90 71 00
www.iedom.fr/la-reunion

Ile de La Réunion Tourisme (IRT) (Reunion Island Tourism)

Tel: 0810 160 000
Email: contact@reunion.fr
www.reunion.fr

Iles Vanille

Tel: 0810 160 000
www.ilesvanille.com

InfoCom Réunion - formation et enseignement (Training and Information)

Tel: (+262) 262 48 33 66
Email: contact@univ-reunion.fr
www.infocom-reunion.fr

Institut d'Administration des Entreprises (IAE) (Institute of Business Administration)

Tel: (+262) 262 21 16 26
Email: iae@univ-reunion.fr
www.iae-reunion.fr

Institut de l'image de L'Océan Indien (ILOI) (Branding and Media Institute)

Tel: (+262) 262 430 881
Email: info@iloi.fr
www.iloi.fr

Institut Français de Recherche pour l'Exploitation de la Mer (IFREMER) (French Institute for Ocean Development Research)

Tel: (+262) 262 42 03 40
Email: delegation.reunion@ifremer.fr
www.ifremer.fr/lareunion

Institut Confucius

Tel: (+262) 262 48 33 66
Email: contact@univ-reunion.fr
www.univ-reunion.fr

Institut de Physique du Globe de Paris (IPGP) (Paris Institute for Physics)

Tel: (+262) 262 27 52 92
www.ipgp.fr

Institut National de la Santé et de la Recherche Médicale (INSERM) (National Institute for Health and Medical Research)

Tel: (+262) 262 35 90 00
www.chr-reunion.fr

Institut Universitaire de Technologie (IUT) (University Institute of Technology)

www.iut-lareunion.fr

Institut de Recherche pour le Développement (IRD) (Development Research Institute)

Tel: (+262) 262 29 93 41
Email: coreus@ird.fr
www.coreus.ird.fr

Institut Universitaire de Formation des Maîtres (IUFM) (University Institute of Training)

Tel: (+262) 262 90 43 43
www.reunion.iufm.fr

L

Laboratoire d'Énergétique, d'Électronique et des Procédés (LE²P) (Laboratory for Energy, Electricity and Processes)

Tel: (+262) 262 93 81 60
Email: doyensc@univ-reunion.fr
www.sciences.univ-reunion.fr

Laboratoire de Physique et Ingénierie Mathématique pour l'Énergie et l'environnement (PIMENT) (Laboratory for Physics and Mathematical Engineering for Energy and the Environment)

Tel: (+262) 262 57 92 45
www.piment.univ-reunion.fr

Laboratoire d'informatique et de Mathématique (LIM) (IT and Mathematics Laboratory)

Tel: (+262) 262 48 33 95
www.lim.univ-reunion.fr

M

MEDEF (Businesses of France)

Tel: (+262) 262 20 01 30
Email: emmanuelle.sardain@medef-reunion.com
www.medef-reunion.com

Météo-France (Weather France)

Tel: (+262) 262 92 11 00
www.meteo-reunion.com

N

Natixis factor - société de financement (Finance Company)

www.factor-natixis.com

NEXA - Agence Régionale de Développement, d'investissement et d'innovation (Regional Agency for Development, Investment and Innovation)

Tel: (+262) 262 20 21 21
Email: investireunion@nexa.re
www.nexa.re

O

Observatoire de Physique de l'Atmosphère de La Réunion (OPAR) (Observatory for Physics and Atmosphere of Reunion)

http://opar.univ-reunion.fr

OCEOR Lease

www.lease.natixis.com

Office de l'eau de La Réunion (Reunion Bureau for Water)

Tel: (+262) 262 30 84 84
Email: office@eaureunion.fr
www.eaureunion.fr

OSEO (Bank)

Tel: (+262) 262 90 00 66
www.oseo.fr

P

Préfecture

Tel: (+262) 262 40 77 77
Email: courrier@reunion.pref.gouv.fr
www.reunion.pref.gouv.fr

Préfecture - SGAR

Tel: (+262) 262 40 77 02

Q

Qualitropic - pôle de compétitivité (Competition Hub)

Tel: (+262) 262 97 10 88
Email: qualitropic@qualitropic.fr
www.qualitropic.fr

S

Société REunionnaise de Financement (SOREFI) (Reunion Finance Company)

Tel: (+262) 262 48 26 25
www.sorefi.fr

SOFIDER Océan Indien (Credit Company)

Tel: (+262) 262 40 32 32
www.sofider.re // www.bred.fr

Surveillance de l'Environnement Assistée par Satellite dans l'Océan Indien (SEAS- 01) (Satellite-Assisted Surveillance of the Environment in the Indian Ocean)

Tel: (+262) 262 48 33 66
Email: contact@univ-reunion.fr
www.osur.univ-reunion.fr

T

Technologies des Énergies Maîtrisées, Énergies Renouvelables et Gestion Isolée de l'Énergie de La Réunion (Temergie) - cluster énergie

(Technology for Controlled Energy, Renewable Energy and Isolated Energy Management of Energy of Reunion)

Tel: (+262) 262 19 05 48
Email: postmaster@temergie.com
www.temergie.com

Technopole de La Réunion

Tel: (+262) 262 90 71 80
Email: courrier@technopole-reunion.com
www.technopole-reunion.com

U

UHR - Union des Hôteliers Réunionnais (Reunion Hoteliers' Union)

Tel: (+262) 262 33 10 10
Email: uhr@orange.fr

UMIH - Union des Métiers et des Industries de l'Hôtellerie (Union for Traders and Hotelery Industries)

Tel: (+262) 262 55 37 30
Email: umih@ilereunion.com

Union Réunionnaise des Producteurs de l'Audiovisuel et du Cinéma (URPAC) (Union for Audiovisual and Cinematic Producers of Reunion)

Tel: (+262) 262 90 71 80
Email: contact@urpac.org
www.urpac.org

Université de La Réunion

Tel: (+262) 262 93 80 80
Email: contact@univ-reunion.fr
www.univ-reunion.fr

NEXA - October 2015

...the first of these is the fact that the ...

...the second of these is the fact that the ...

...the third of these is the fact that the ...

...the fourth of these is the fact that the ...

...the fifth of these is the fact that the ...

...the sixth of these is the fact that the ...

...the seventh of these is the fact that the ...

...the eighth of these is the fact that the ...

...the ninth of these is the fact that the ...

...the tenth of these is the fact that the ...

...the eleventh of these is the fact that the ...

...the twelfth of these is the fact that the ...

...the thirteenth of these is the fact that the ...

...the fourteenth of these is the fact that the ...

...the fifteenth of these is the fact that the ...

...the sixteenth of these is the fact that the ...

...the seventeenth of these is the fact that the ...

...the eighteenth of these is the fact that the ...

...the nineteenth of these is the fact that the ...

...the twentieth of these is the fact that the ...

...the twenty-first of these is the fact that the ...

...the twenty-second of these is the fact that the ...



62, Boulevard du Chaudron - BP 60030
97491 Sainte Clotilde Cedex
Reunion Island
Tél. (+262) 262 20 21 21 / Fax (+262) 262 41 00 26
investinreunion@nexa.re

www.investinreunion.re



This document is co-financed by the European Union.
Europe is committed in Reunion through the ERDF - European Regional Development Fund